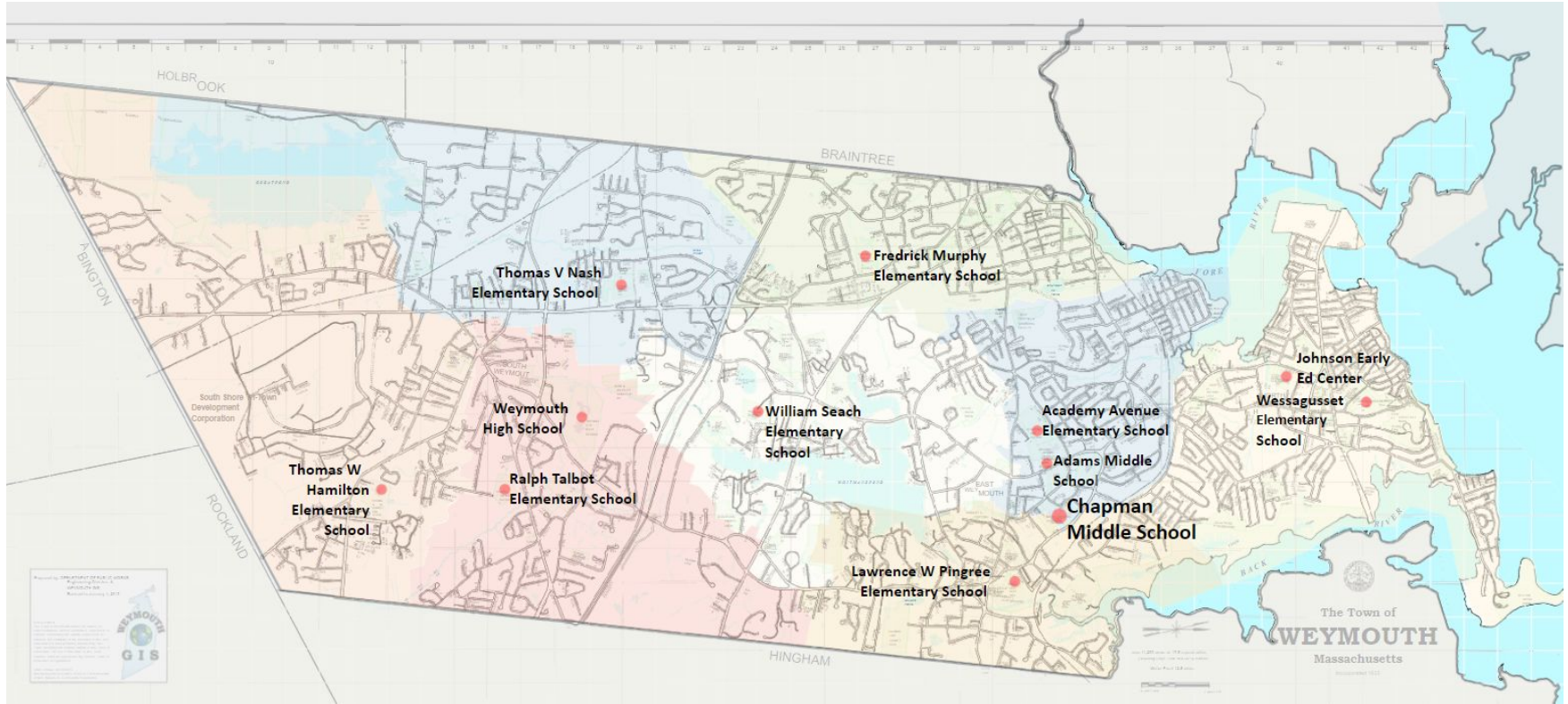




# Elden Johnson Building Reutilization

April 25, 2024

# Our District



**Our District**

**Our  
Challenge  
s**

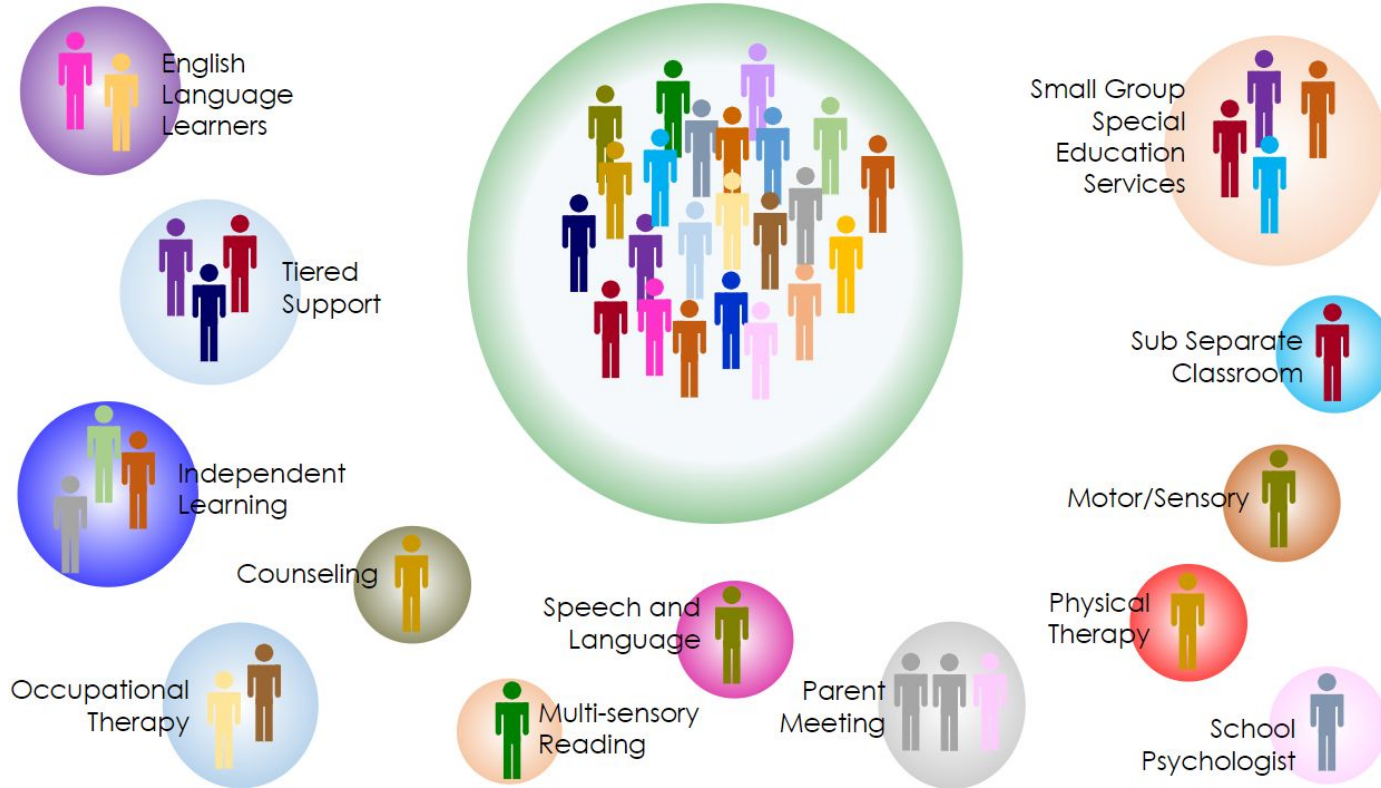
**Space**

**Enrollment**

**Capacity**

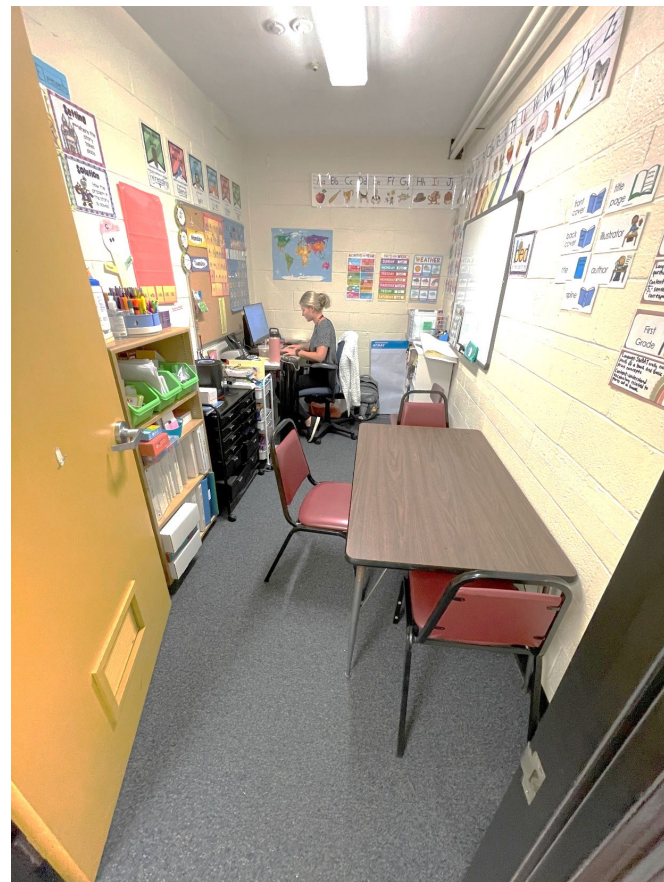
**Facilities**

# Our District

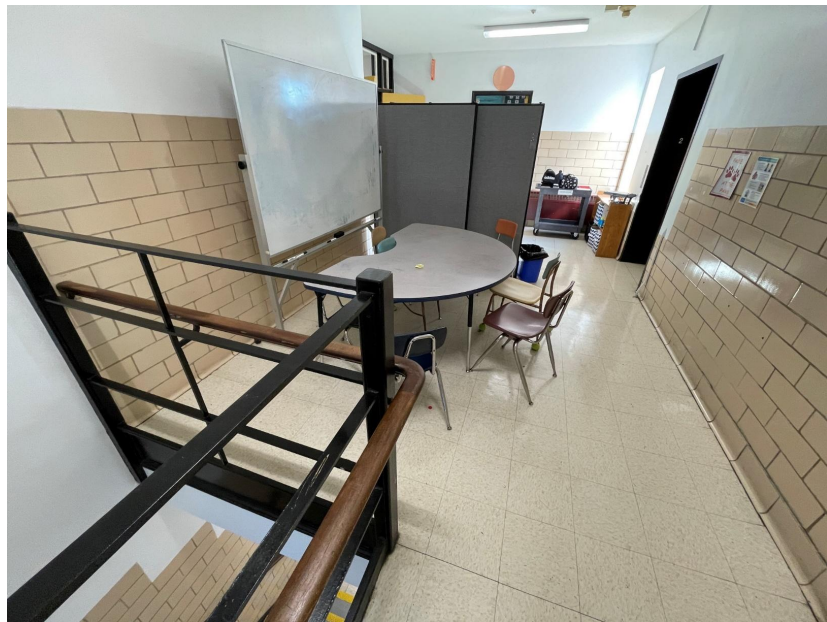




# Space

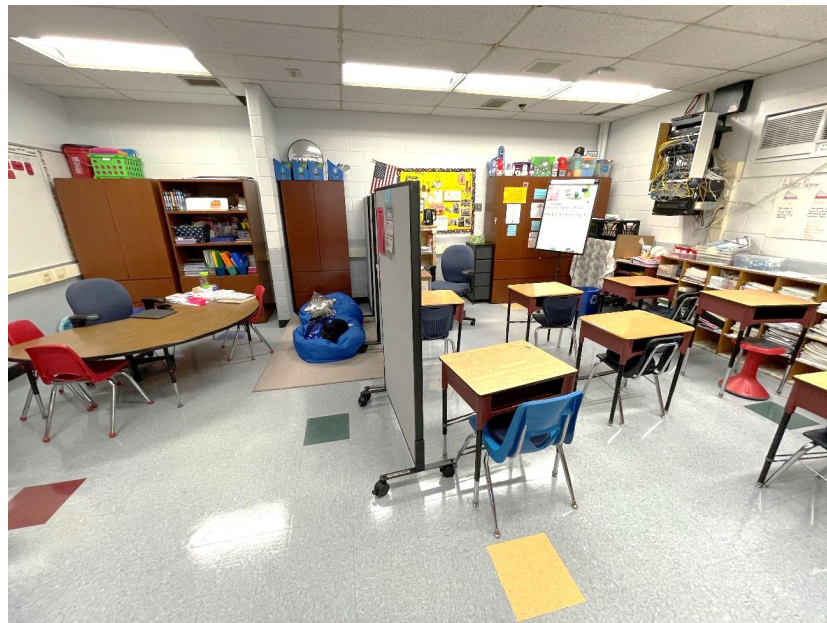


# Space

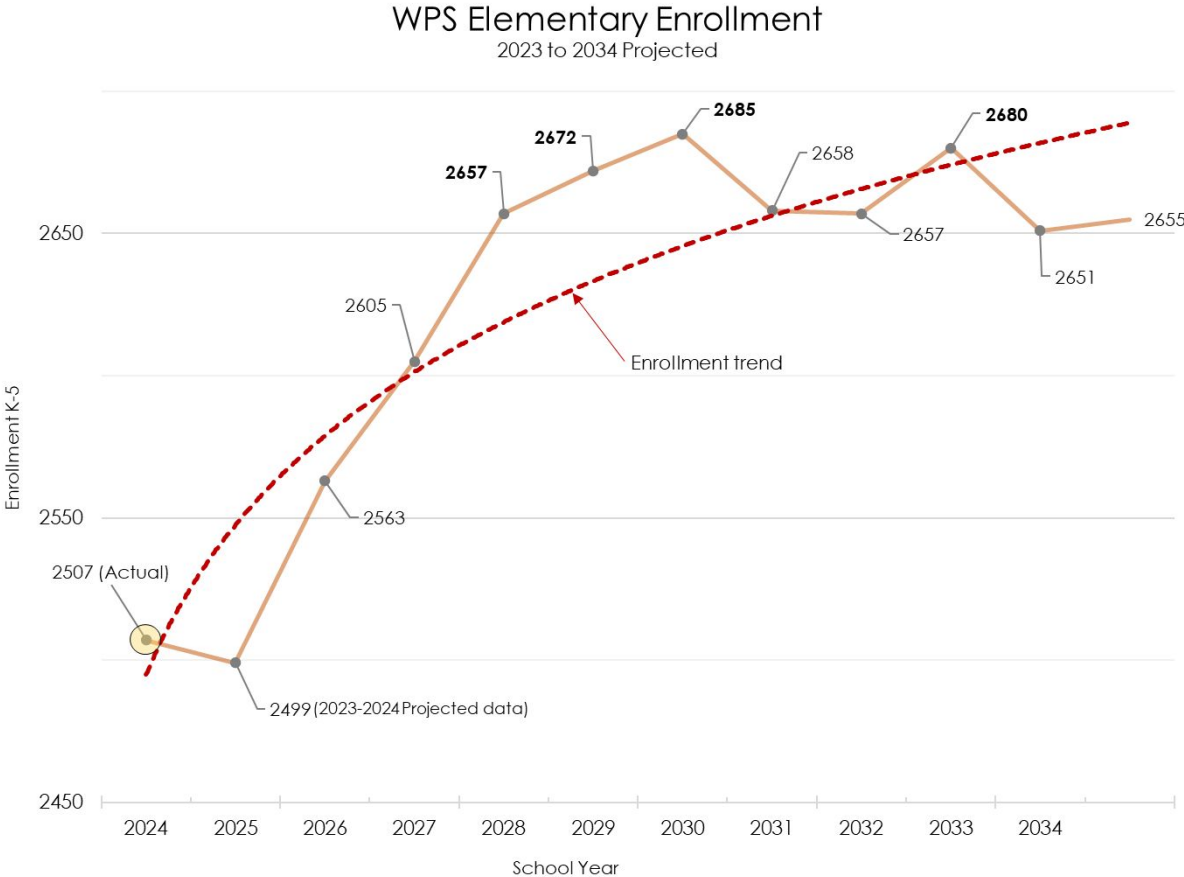




# Space



# Enrollment





# Capacity

Name	# of core Class	Calc Enrol @23	Current Enrollment	% Capacity
Seach	19	437	384	88%
Wessagusset	15	345	327	95%
Hamilton	17	391	350	90%
Academy	16	368	352	96%
Murphy	12	276	283	103%
Talbot	13	299	296	99%
Pingree	12	276	267	97%
Nash	12	276	261	95%
District	116	2668	2520	94%

# Facility challenges

## It's what is missing

specials spaces

gymnasium

special education spaces

bathrooms for staff

parent meeting spaces

storage

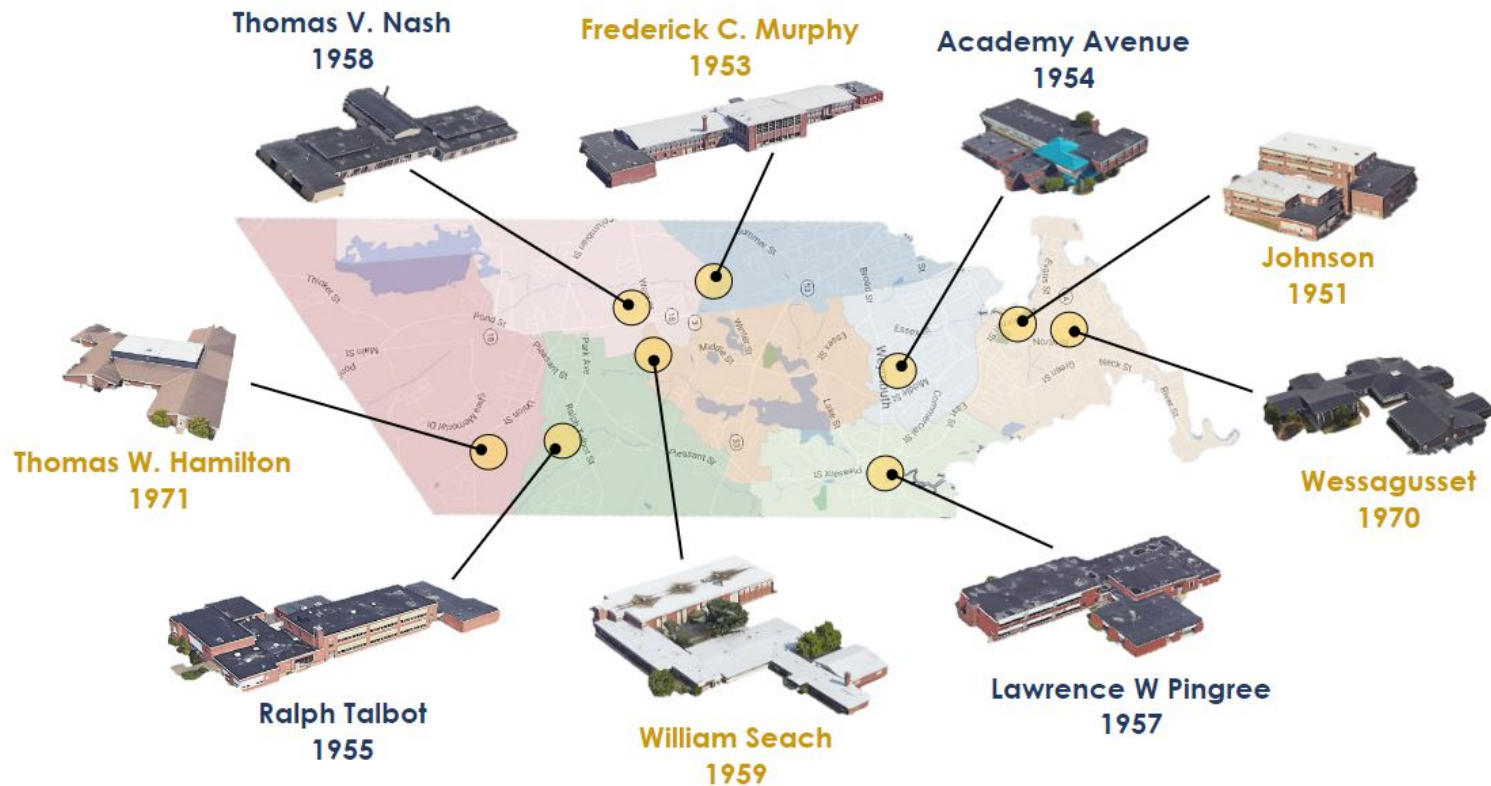
# Option C



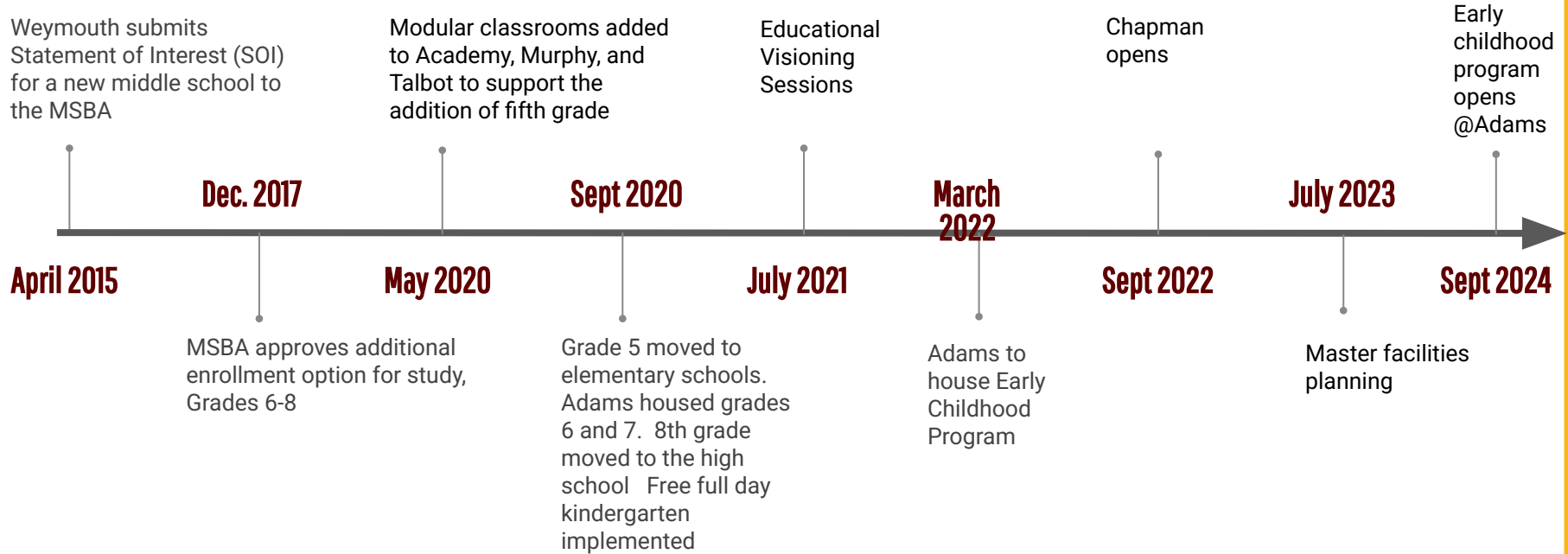
If opened in September 2025, will help to offset elementary enrollment increases



# Option C



# Background



# Adams Reutilization

Option A	Option B	Option C
Convert AAMS to a 9th Elementary school	Relocate Johnson Early Childhood Center to AAMS	Relocate Johnson Early Childhood Center and all Kindergarten classes to AAMS



# Enrollment data

	14/15	23/24
Academy	347	338
Hamilton	405	351
Murphy	263	283
Nash	242	252
Pingree	231	266
Seach	375	384
Talbot	297	297
Wessagusset	348	328
Total	2508	2499

	14/15	15/16	16/17	17/18	18/19	19/20	*20/21**	21/22	22/23	23/24
<b>Kindergarten</b>	438	437	405	383	356	360	374	384	420	442
<b>Grade 1</b>	528	472	461	421	396	364	382	411	423	430
<b>Grade 2</b>	505	512	458	435	421	396	377	380	419	431
<b>Grade 3</b>	534	494	485	436	424	418	396	376	385	430
<b>Grade 4</b>	503	521	473	470	435	416	401	393	376	383
<b>Grade 5</b>							408	397	397	383
<b>Total</b>	2508	2436	2282	2145	2032	1954	2338	2341	2420	2499
<b>ELL</b>	3.10%	3.10%	3.40%	3.60%	3.80%	4.30%	5.50%	5.70%	8.20%	8.00%
<b>SpEd</b>	17.10%	16.80%	17.30%	18.40%	19.20%	20.60%	21.10%	22.00%	23.00%	22.90%

\* 5th Grade added to elementary schools

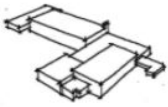
\*\* Free full day kindergarten

# Johnson Reutilization

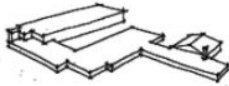
Option A	Option B	Option C
Dual Language Elementary School	Innovation Elementary School	Traditional Elementary School



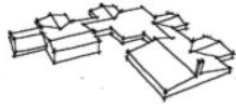
# Option A/B/C



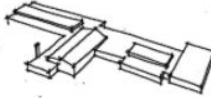
Talbot



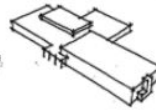
Seach



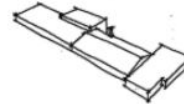
Wessagusset



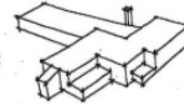
Nash



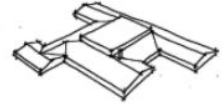
Pingree



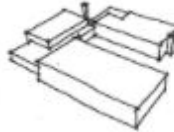
Murphy



Academy



Hamilton



Johnson

# Johnson Reutilization

Option A	Option B	Option C
Dual Language Elementary School	Innovation Elementary School	Traditional Elementary School

# Option A

---

Dual Language  
Elementary School

Two way immersion

50/50 Model

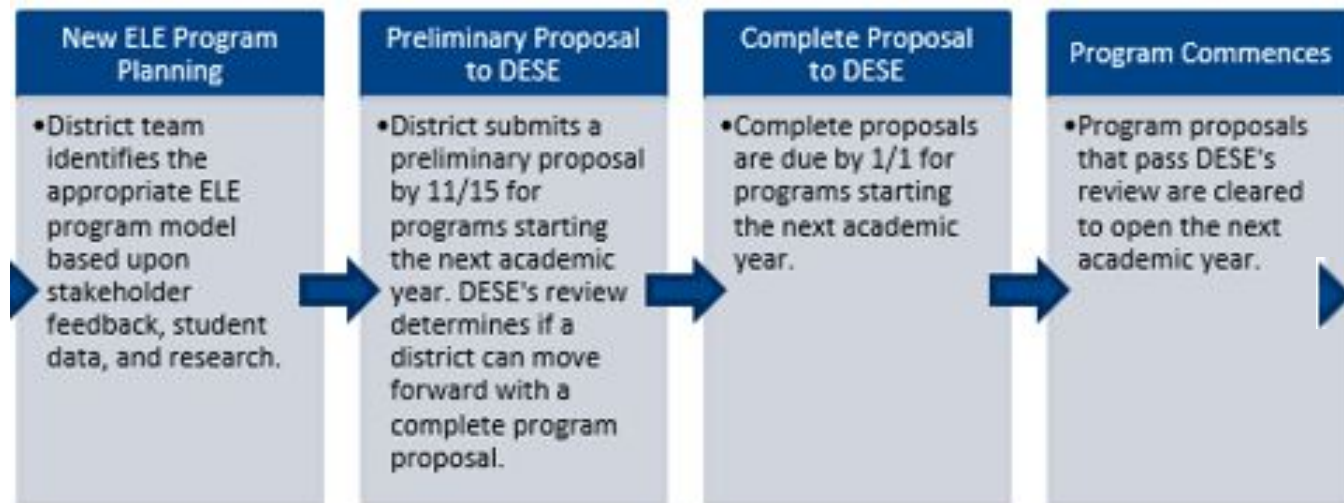
Instruction in English and partner language (Portuguese)

Bilingualism/Biliteracy

Enrollment by choice

# Option A

## Dual Language Elementary School Process

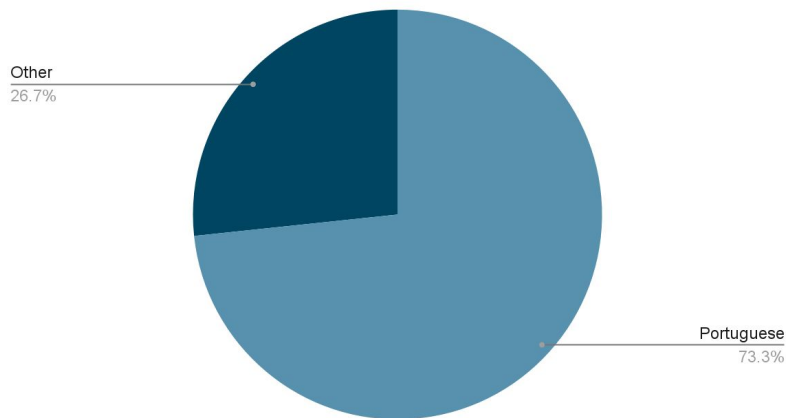


# Option A

## Dual Language Elementary School

	Current EL
Kindergarten	45
Grade 1	64
Grade 2	62
Grade 3	50
Grade 4	34
Grade 5	30
	285

First Language





# Option A

---

Dual Language  
Elementary School

Districts with Dual Language Programs (Portuguese)

Brockton - *Manthala George Jr School*

Cambridge - *King Open School*

Framingham - *Potter Road Elementary*

Hudson - *Farley Elementary*

# Option B

---

Innovation  
Elementary School

Instructional theme or areas of focus

Autonomy and flexibility

Empowers educators

Enrollment by choice

# Option B

---

## Innovation Elementary School Process

- Step 1 - Initial prospectus submitted to Superintendent
- Step 2 - Screening committee reviews and votes prospectus(30 days)
- Step 3 - Innovation committee develops and internally approves plan(30 days)
- Step 4 - Innovation committee, superintendent and union review plan(40 days)
- Step 5 - School committee hold public hearing and vote on plan(60 days)
- Step 6 - If SC approves plan, Innovation School authorized for 5 years

# Option B

---

Innovation  
Elementary School

Districts with Innovation Schools

Barnstable - *K-3*

Boston - *PK-5*

New Bedford - *K-5*

Revere - *K-5*

Salem - *K-5*

Worcester - *PK-6*

# Option C

---

## Traditional Elementary School

Replicate current elementary school structure

Reduces planning process

Requires redistricting



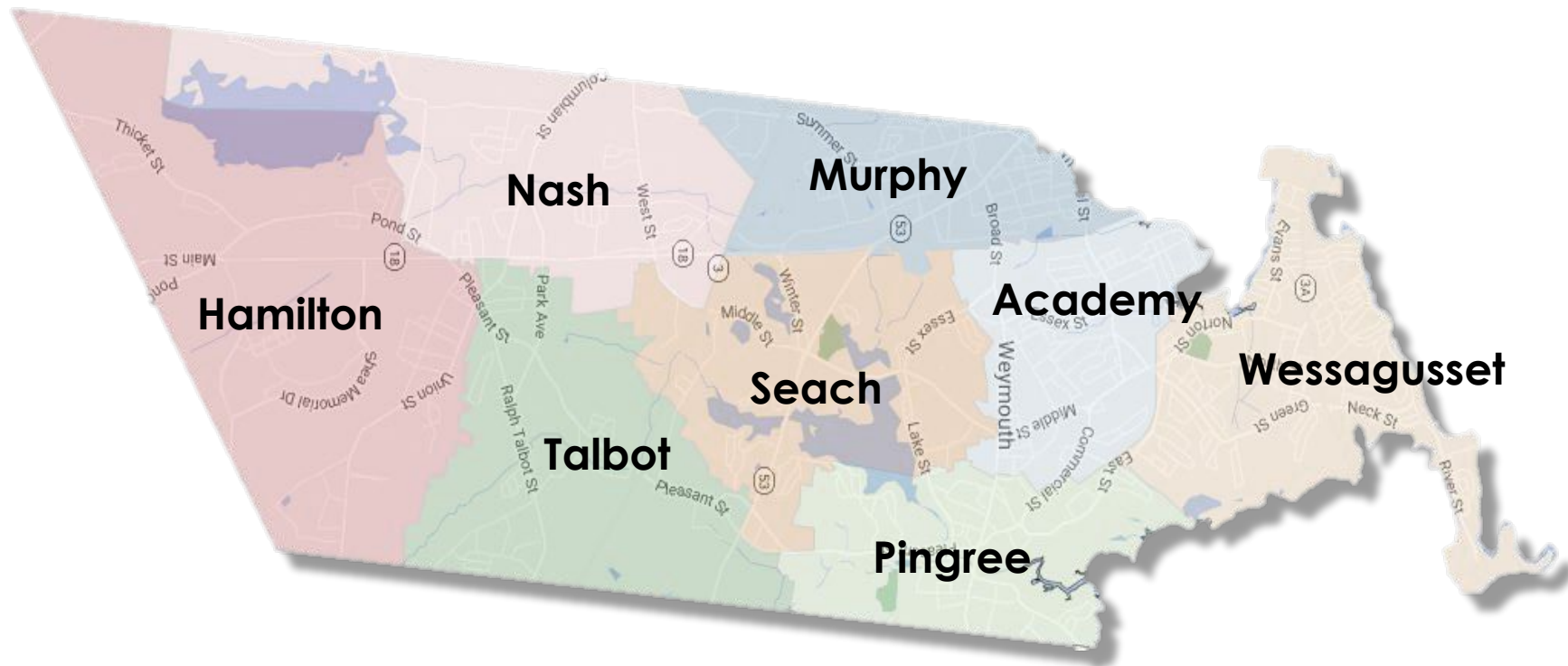
# Option C

---

Traditional  
Elementary School  
Process

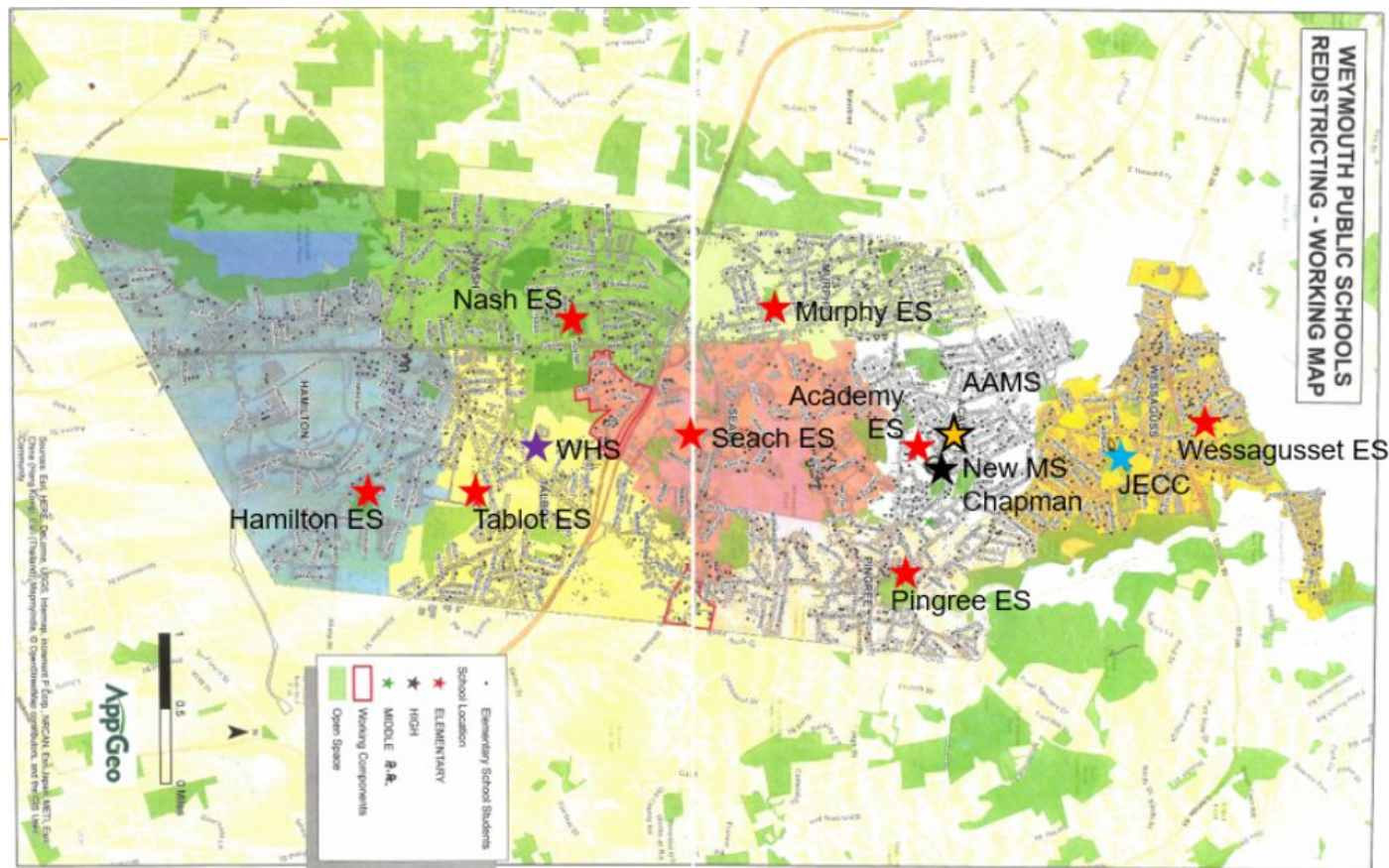
Redistrict school zones  
School committee policies/community awareness  
Impact on student registration and school assignment  
Redistricting to be completed by January 2025  
Registration from January - April 2025

# Option C



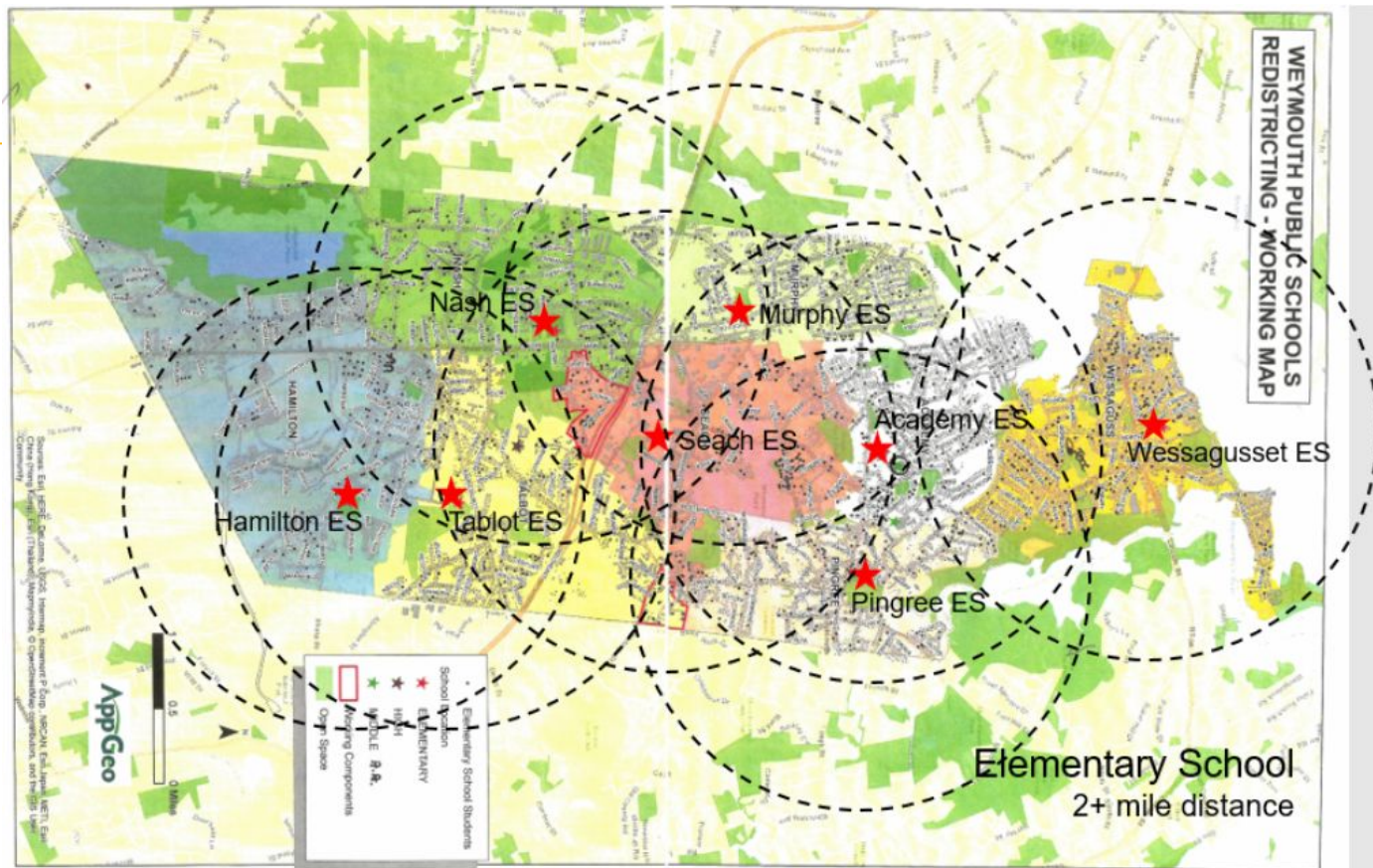
# Option C

## Traditional Elementary School



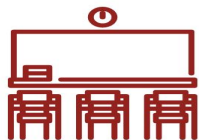
# Option C

Traditional  
Elementary School





# Considerations



**Educational Spaces**



**Transportation**



**Support  
service**

# Staffing model

Option A	Option B	Option C
Dual Language Elementary School	Innovation Elementary School	Traditional Elementary School
Administration Classroom ESP Service providers Specials Nurse Custodian Front office	Administration Classroom ESP Service providers Specials Nurse Custodian Front office	Administration Classroom ESP Service providers Specials Nurse Custodian Front office



# Enrollment

Option A	Option B	Option C
Dual Language Elementary School	Innovation Elementary School	Traditional Elementary School
Choice/Lottery K/1 (possible 2) First language 50% English 50% Portuguese	Choice/Lottery K/1 (possible 2)	Redistrict K/1 (possible 2) Students assigned Consideration to siblings and distance

# Costs

Option A	Option B	Option C
Dual Language Elementary School	Innovation Elementary School	Traditional Elementary School
Approximately \$1 million	Approximately \$1 million	Possibly less based on redistricting



# Next Steps

**Community forum  
May 8**

**School committee  
May 9**

# Questions?

