

Special Education Presentation to Budget Sub-Committee



February 5, 2013

Overall Trends in Special Education

- *Increasing accountability of the federal and state mandates that requires placement in the least restrictive environment*
- *For the past 10 years in Weymouth, the numbers of special education students has averaged between 1200-1300 students*
- *Over the past three years, the percentage of student identified with disabilities has increased and is higher than the state average*
- *Out of district placements in Weymouth have consistently dropped over the past 10 years*

Out of District Placements

2012-2013	98
2011-2012	95
2010-2011	102
2009-2010	110
2008-2009	109
2007-2008	131
2006-2007	132
2005-2006	120

Cost Comparisons

Tuitions ODP (per student)

League \$ 75,000+

May \$80,000-102,000

Higashi \$70,000+

1:1 paraprofessional
\$35,000-\$51,000

Weymouth

(4 students in CEP)

Teacher's Salary

\$ 46,642.00

ABA Therapist

\$22,000.00-\$26,000

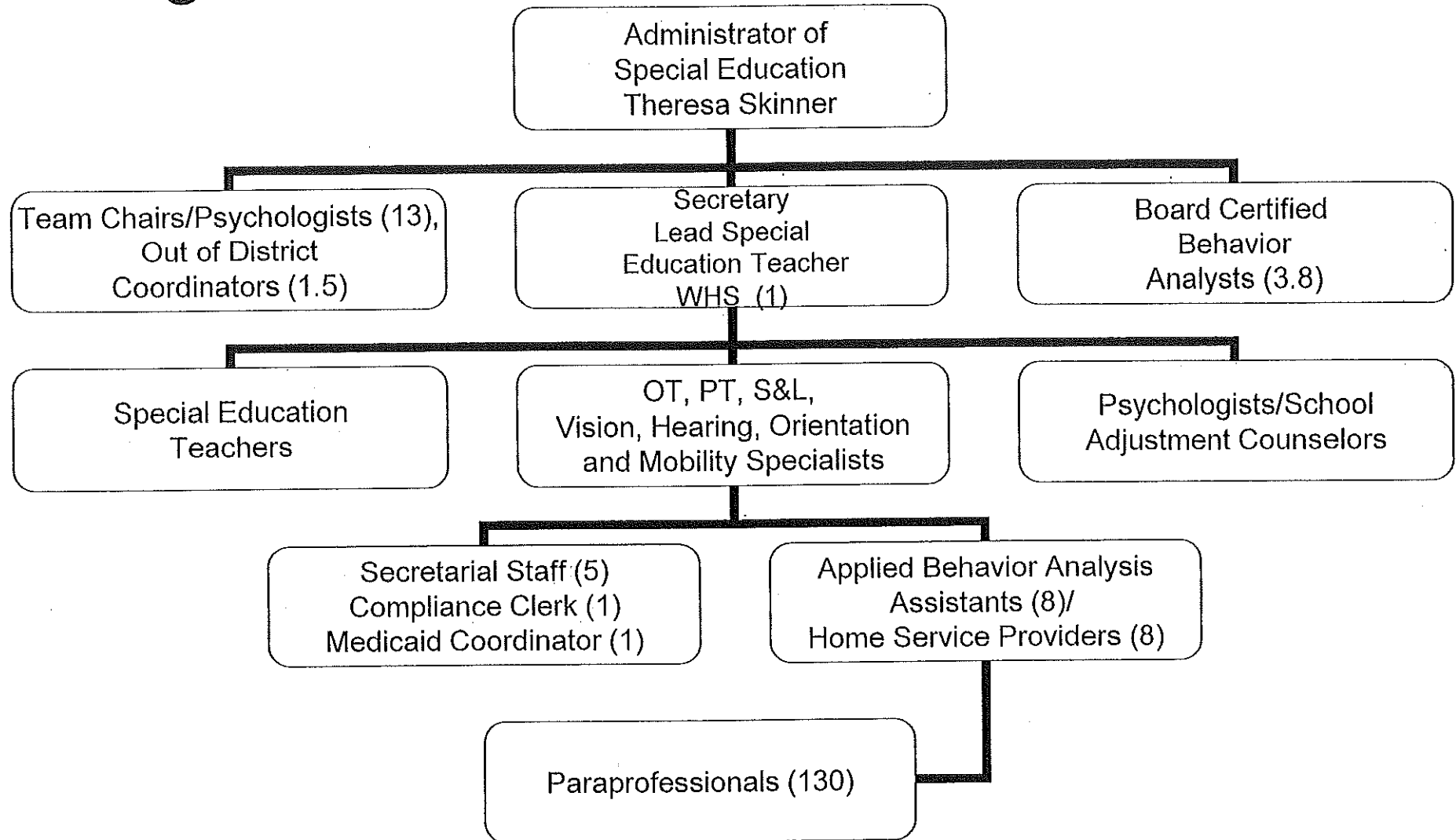
Paraprofessional

\$15,000

Costs Associated with Maintaining students in district

- Staffing levels need to be appropriate to effectively support students
- Materials and equipment need to be purchased to set up additional classrooms
- Support staff need to be provided in many cases
 - Paraprofessionals
 - BCBA's
 - ABA Therapists
- Training for staff

Organizational Chart Special Education



District Comparison-Administrative Support for Special Education Directors

District	Additional Admin.	# students	# sp. Ed (approx)
Weymouth	0	7100	1275
Quincy	4 Team Administrators	8000	1523
Plymouth	1 Asst. Admin.	8000	1400
Stoughton	1 Asst. Admin	3819	675
Braintree	1 Asst. Admin	5478	1040
Blue Hills	1 Dept. Chair	836	200
Bourne	2 Dept. Chair	2175	234

Needs

- Assistant Director Special Education
- CEP Teacher at WHS
- ABA Therapist for CEP at WHS
- .2 OT at Pingree
- .2 Speech at Pingree
- Counselor for Middle Schools