

Weymouth Public Schools **Master Plan**



School Committee Update
December 7th, 2023

Objective

- Provide background on the project and define the purpose of the study.
- Understand enrollment increases and how they will impact our elementary schools.
- Provide an understanding of the capacity of our elementary schools and its impact on teaching and learning
- Discuss short term and long term solutions

Weymouth Elementary Schools

Our Students

2536



54.4% High Needs

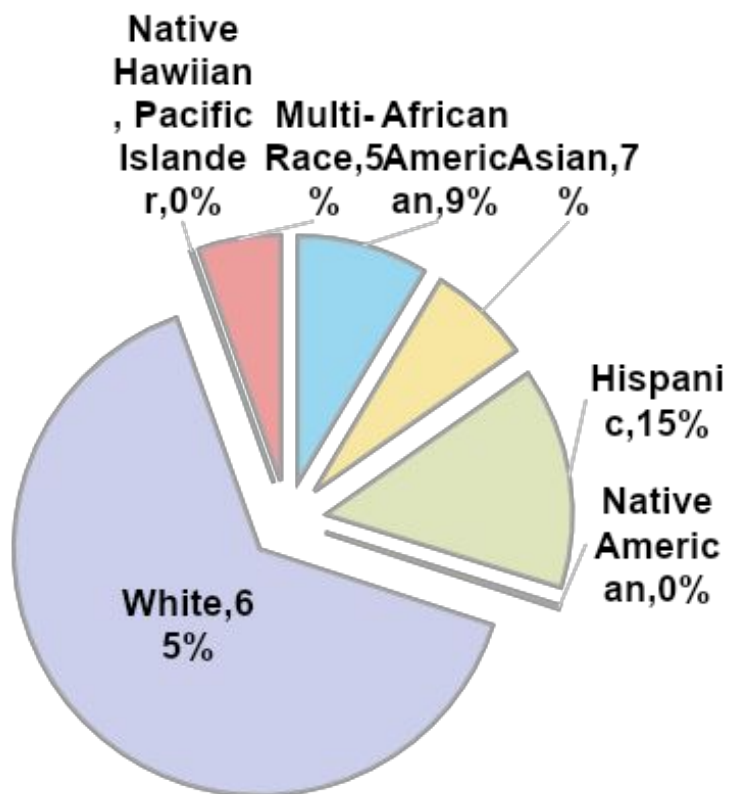
40.5% Low Income

22.9% Students with Disabilities

18% First language not English

8% ELL

30 countries represented by our students



8
Elementary
Schools

Our Schools

16 Substitutes

10 Counseling

8 Nurses

5 BCBA

16 MTSS

40 Transportation

8 Traffic Supervisors

500
Staff

16 Administrators

244 Teachers

82 ESP

16 Custodians

19 Secretaries

8 Food Service

16 Coaches

Our District

Scan the QR code
to find out about
all of our district's
information



Our Schools

Thomas V. Nash



Frederick C. Murphy



Academy Avenue



Wessagusset

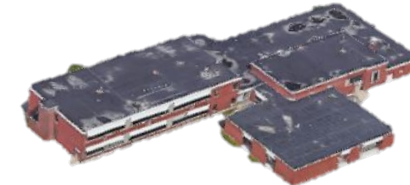
Thomas W. Hamilton



Ralph Talbot

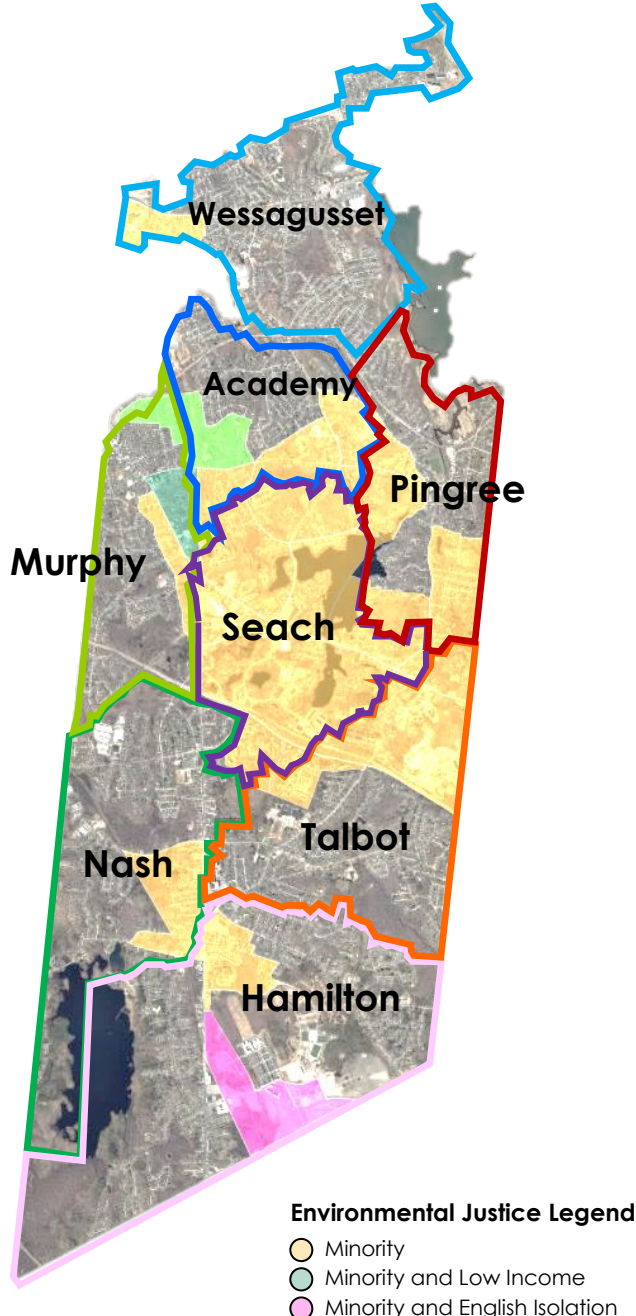
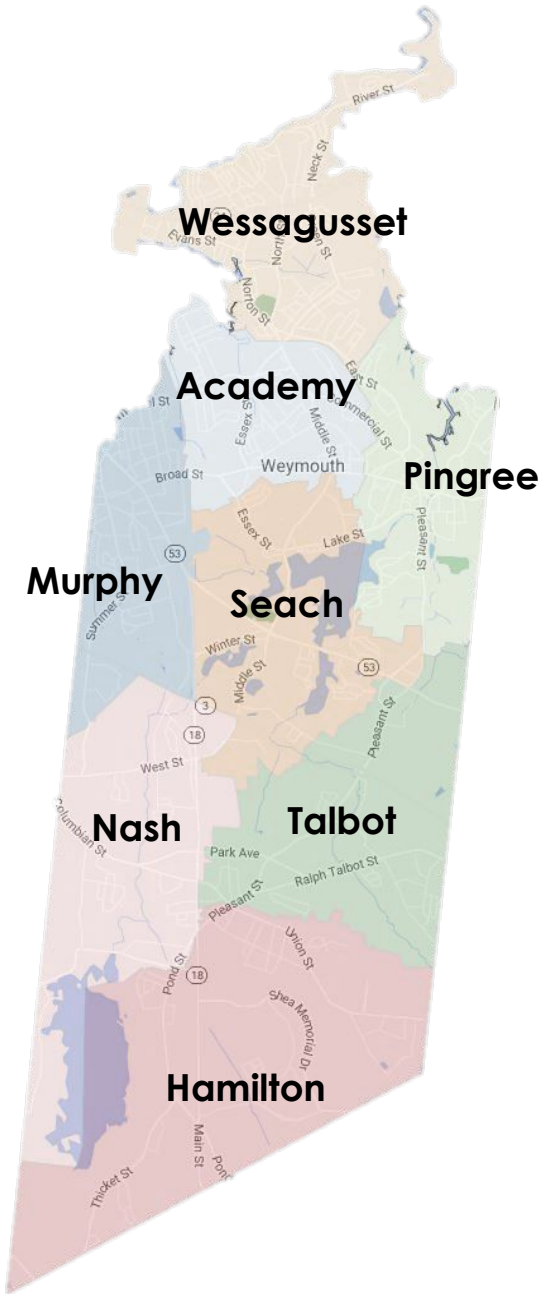


William Seach



Lawrence W Pingree

Our Neighborhoods



Our Neighborhoods



Union Point-Southfield



2011-2012

Construction begins



2013-2014



2018-2019



2021-2022



Present Day

1275



Our Challenges

Space

Enrollment

Capacity

Facilities

Our Challenges

Space

Enrollment

Capacity

Facilities

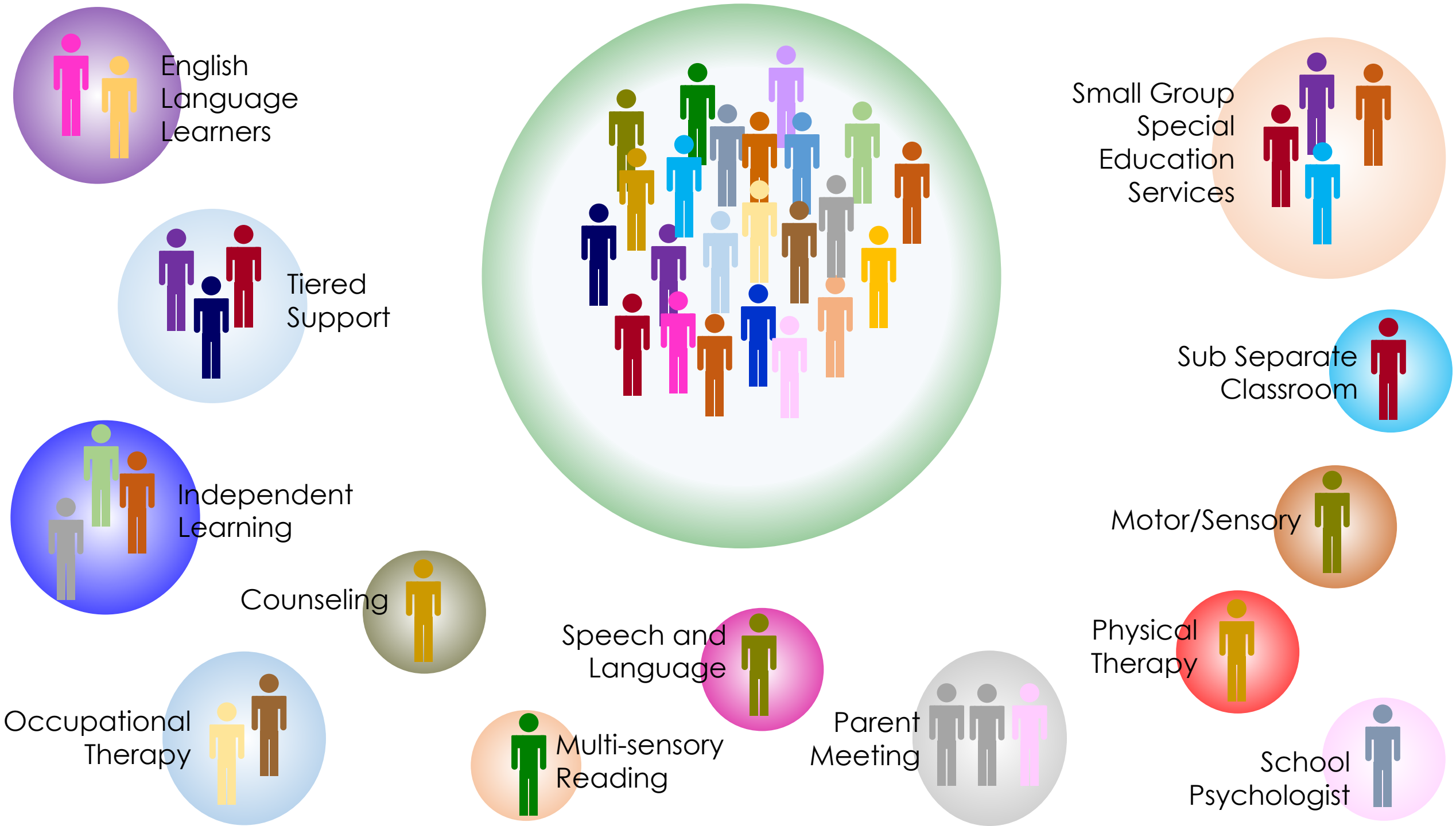
1959

53 71

60



Educational building standards where very different than there are today.



Space

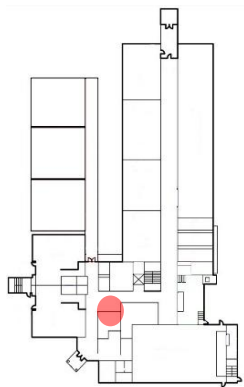


Space

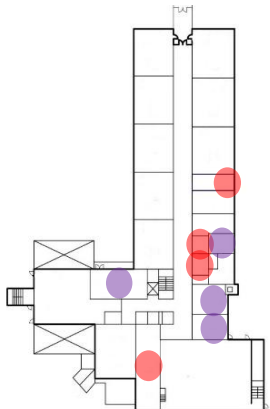


Space

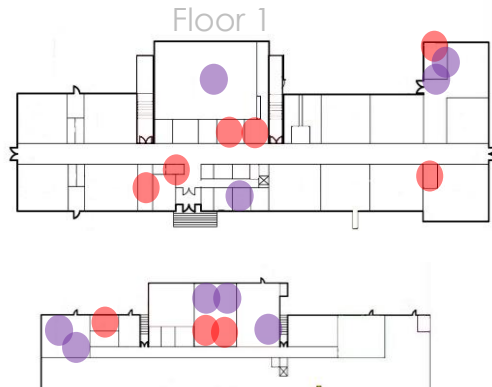




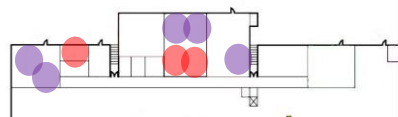
Floor 1



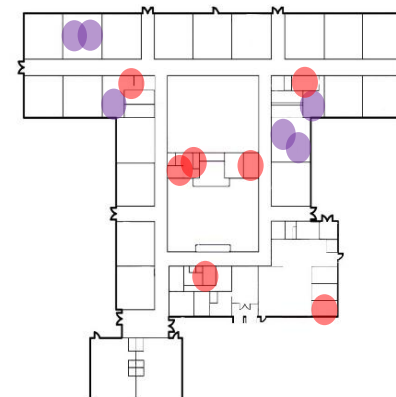
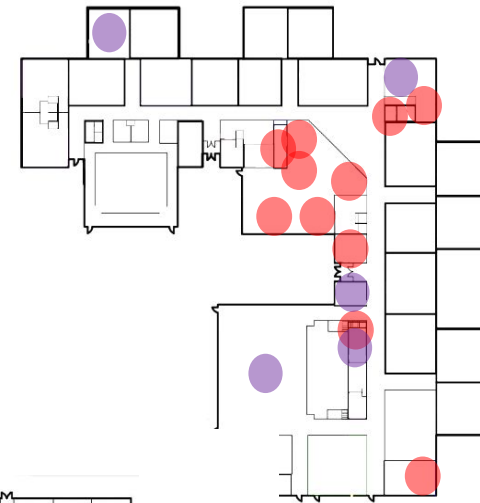
Floor 2



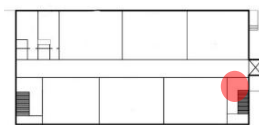
Floor 1



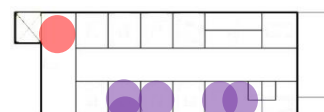
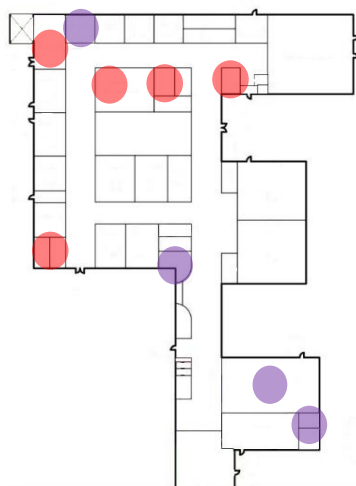
Basement



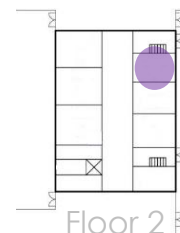
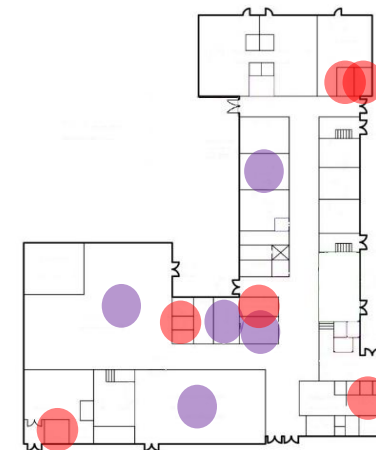
Floor 1



Floor 2











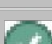



Floor 2



Floor 2

100%

Impacts

| | Types of non educational spaces | | | | | | | |
|-----------------|--|---|--|--|---|--|--|-----------------|
| School Facility | Close ts ¹ | Stage | Library | Hallway | Stairwell | Storage ² | Other | Notes |
| Academy |  |  | |  | |  | | |
| Hamilton |  |  | | | |  | | |
| Murphy |  |  |  |  | |  | | Gym-café-torium |
| Nash |  |  |  | | |  | | Gym-café-torium |
| Pingree |  |  |  |  |  | |  | Gym-café-torium |
| Seach | | |  |  |  |  |  | |
| Talbot |  |  |  |  | |  |  | Gym-torium |
| Wessagusset |  | |  |  | |  |  | |

Impacts

*Learning
Environments
Matter*

Learning

- ELL
- Special Education
- MTSS

Teaching

- Coaches
- Assistant Principals
- OT,PT,SLP,BCBA, Psychologists
- Team Chairs
- Specialists
- Learning Preparation and Planning

Other Impacts

- Environmental
- Health
- Space Safety
- Privacy (FERPA, HIPPA)
- Storage

Our Challenges

Space

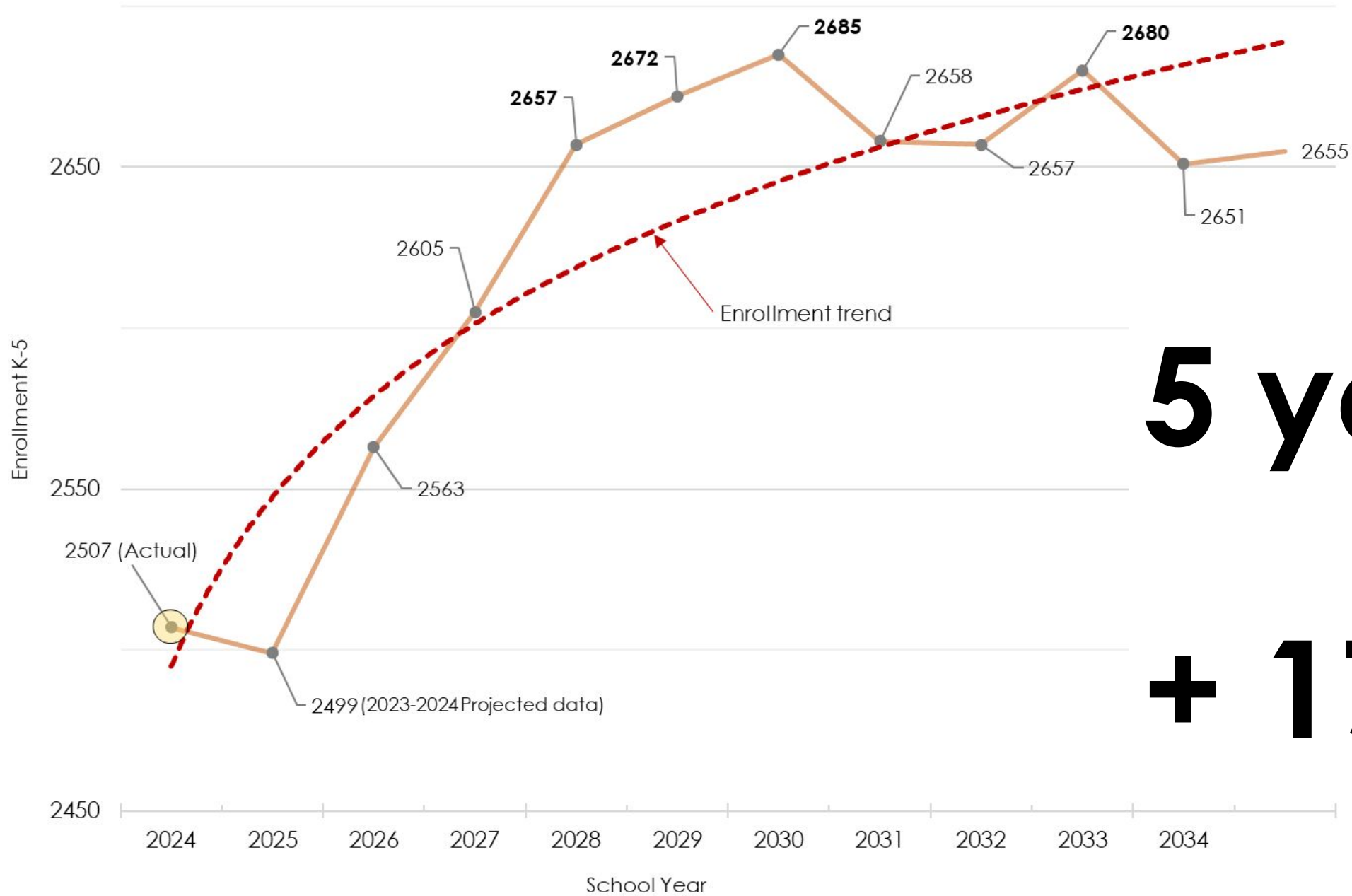
Enrollment

Capacity

Facilities

WPS Elementary Enrollment

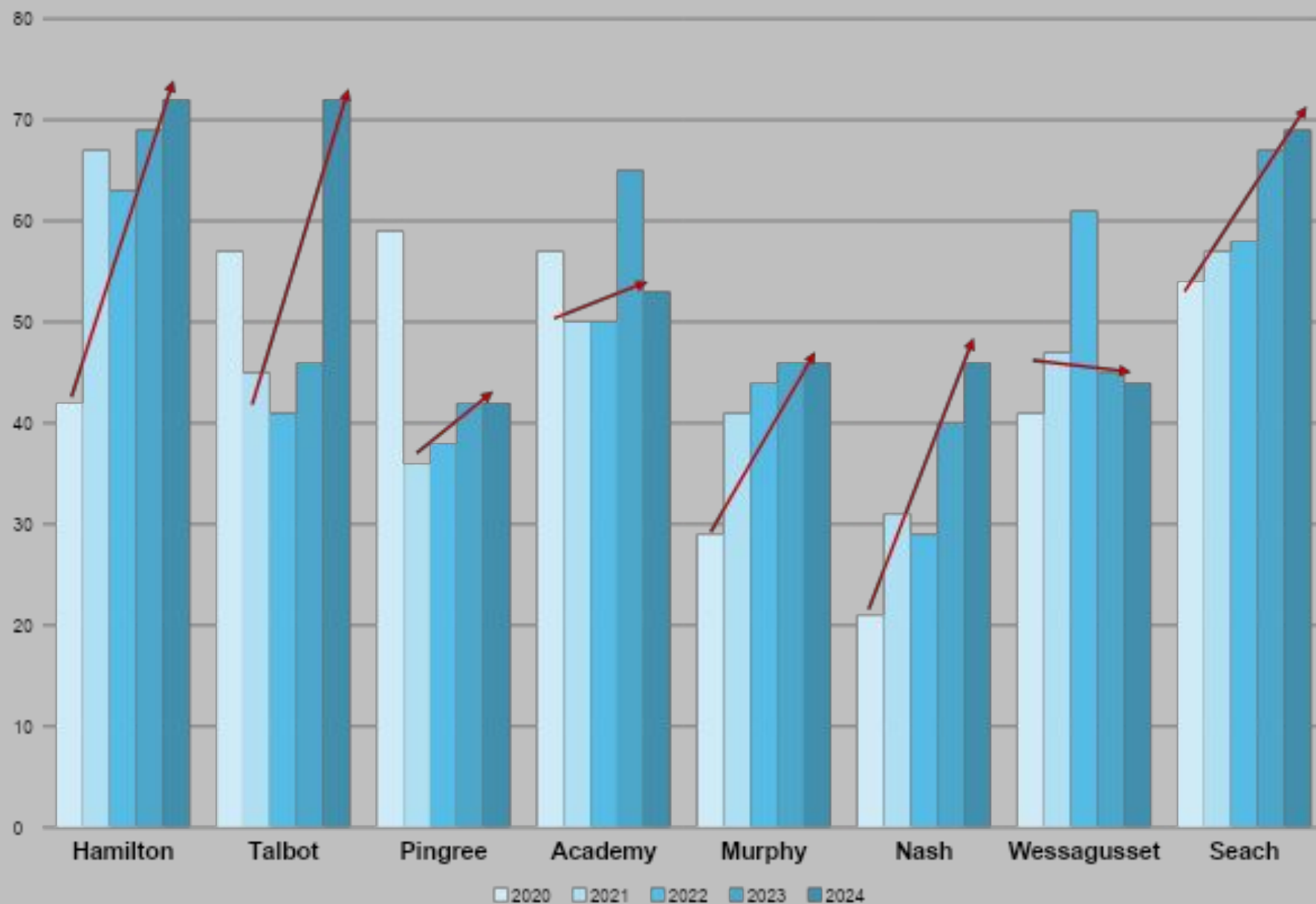
2023 to 2034 Projected



5 years

+ 178

Kindergarten 5 year Trend



PK-12 Overall Enrollment

10 year Historical - 10 year projected



Impacts

| | Existing number of <i>general education</i> classes by grade | | | | | |
|-----------------|--|---|---|---|---|---|
| School Facility | K | 1 | 2 | 3 | 4 | 5 |
| Seach | 3 | 3 | 3 | 3 | 3 | 3 |
| Wessagusset | 2 | 3 | 3 | 3 | 2 | 2 |
| Hamilton | 3 | 3 | 3 | 4 | 2 | 2 |
| Academy | 3 | 3 | 3 | 3 | 3 | 2 |
| Murphy | 2 | 2 | 2 | 2 | 2 | 2 |
| Talbot | 3 | 2 | 2 | 2 | 2 | 2 |
| Pingree | 2 | 2 | 2 | 2 | 2 | 2 |
| Nash | 2 | 2 | 2 | 2 | 2 | 2 |

Impacts

| Average Class Sizes with Current Core Spaces (NESDC 11/28/2023) | | | | | | |
|---|----|-----------------------|-----------------------|-----------------------|-----------------------|-----------------------|
| Year | K | 1 st Grade | 2 nd Grade | 3 rd Grade | 4 th Grade | 5 th Grade |
| 2024 | 22 | 22 | 22 | 20 | 21 | 23 |
| 2025 | 21 | 24 | 22 | 21 | 23 | 22 |
| 2026 | 20 | 22 | 24 | 21 | 24 | 25 |
| 2027 | 22 | 21 | 23 | 23 | 24 | 25 |
| 2028 | 21 | 24 | 21 | 22 | 26 | 25 |
| 2029 | 21 | 22 | 24 | 21 | 25 | 28 |
| 2030 | 21 | 22 | 22 | 23 | 24 | 26 |
| 2031 | 21 | 22 | 22 | 21 | 26 | 25 |
| 2032 | 21 | 22 | 22 | 22 | 25 | 28 |
| 2033 | 21 | 22 | 22 | 22 | 25 | 26 |
| 2034 | 21 | 22 | 23 | 22 | 25 | 26 |

Impacts

| Enrollment Projections: Increase # of students per grade | | | | | | |
|--|-----|-----------------------|-----------------------|-----------------------|-----------------------|-----------------------|
| School Year | K | 1 st Grade | 2 nd Grade | 3 rd Grade | 4 th Grade | 5 th Grade |
| 2024 Act | 446 | 431 | 433 | 430 | 383 | 384 |
| 2025 | -27 | 42 | 1 | 7 | 38 | -5 |
| 2026 | -52 | 17 | 45 | 10 | 45 | 33 |
| 2027 | -3 | -9 | 19 | 55 | 48 | 40 |
| 2028 | -34 | 43 | -7 | 28 | → 92 | 43 |
| 2029 | -32 | 10 | 46 | 2 | 66 | → 86 |
| 2030 | -30 | 12 | 12 | 56 | 40 | 61 |
| 2031 | -30 | 14 | 14 | 21 | → 93 | 38 |
| 2032 | -26 | 14 | 16 | 23 | 59 | → 87 |
| 2033 | -30 | 18 | 16 | 25 | 61 | 54 |
| 2034 | -30 | 14 | 20 | 25 | 63 | 56 |

Impacts

| Enrollment Projections: Increase # of core classes per grade | | | | | | |
|--|-----|-----------------------|-----------------------|-----------------------|-----------------------|-----------------------|
| School Year | K | 1 st Grade | 2 nd Grade | 3 rd Grade | 4 th Grade | 5 th Grade |
| 2024 Act | 446 | 431 | 433 | 430 | 383 | 384 |
| 2025 | 0.0 | 1.9 | 0.0 | 0.3 | 1.7 | -0.2 |
| 2026 | 0.0 | 0.8 | 2.0 | 0.5 | 2.0 | 1.5 |
| 2027 | 0.0 | -0.4 | 0.9 | 2.5 | 2.2 | 1.8 |
| 2028 | 0.0 | 2.0 | -0.3 | 1.3 | → 4.2 | 2.0 |
| 2029 | 0.0 | 0.5 | 2.1 | 0.1 | 3.0 | → 3.9 |
| 2030 | 0.0 | 0.5 | 0.5 | 2.5 | 1.8 | 2.8 |
| 2031 | 0.0 | 0.6 | 0.6 | 1.0 | → 4.2 | 1.7 |
| 2032 | 0.0 | 0.6 | 0.7 | 1.0 | 2.7 | → 4.0 |
| 2033 | 0.0 | 0.8 | 0.7 | 1.1 | 2.8 | 2.5 |
| 2034 | 0.0 | 0.6 | 0.9 | 1.1 | 2.9 | 2.5 |

Impacts

Learning

- Class Size
- Overcrowding
- Increased Distraction
- Educational Resources

Teaching

- Less individualized attention
- Physical Classroom Spaces
- Auxiliary Spaces
- Transportation Services

Other Impacts

- Environmental
- Noise
- Health and Safety

Capacity

the maximum
amount that
something can
contain

Capacity is simply the
recommended number of
students that can appropriately
function within a space for the
specified task.
(EUA Architects)

Space

Enrollment

Capacity

Facilities

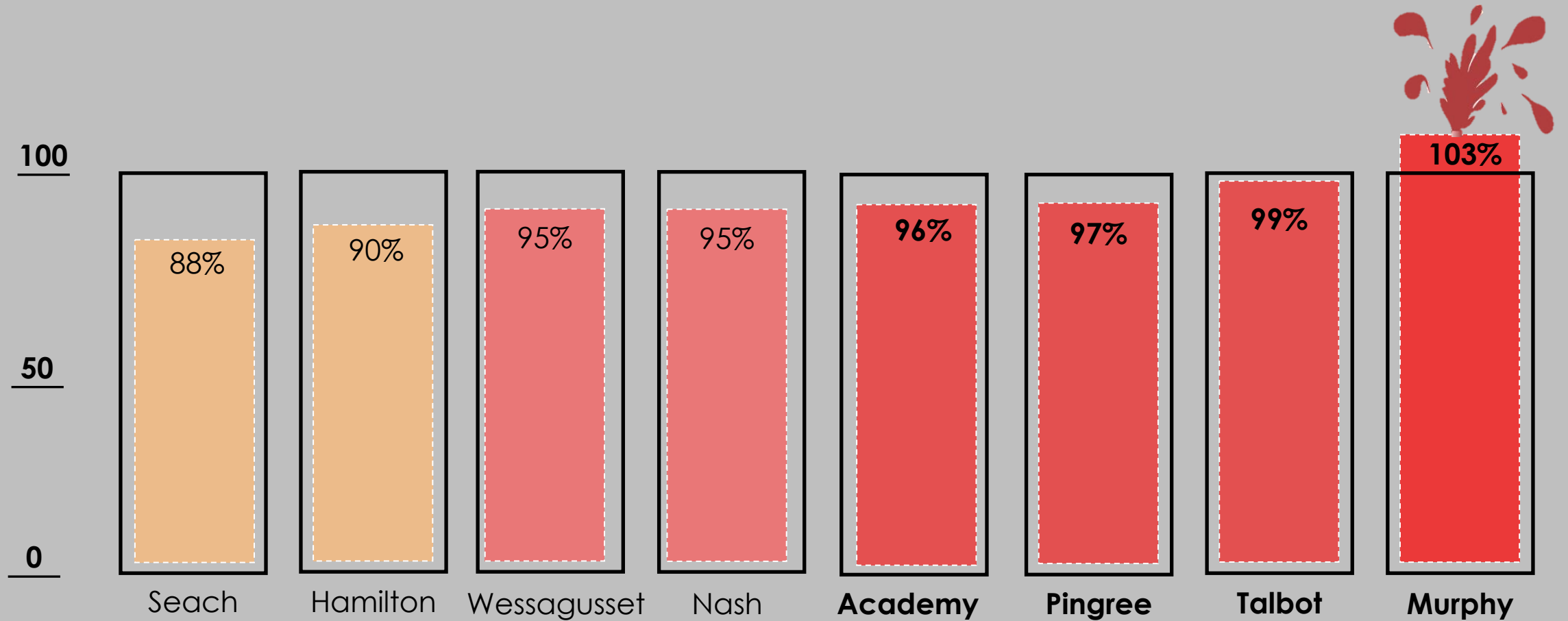
Capacity

| | # of Non Educational Spaces (NES) and Utilization | | | |
|-----------------|---|---------------|------------------|----------------|
| School Facility | NES | Shared Spaces | Core Utilization | SE Utilization |
| Academy | 4 | 4 | 100% | 80% |
| Hamilton | 5 | 9 | 90% | 65% |
| Murphy | 3 | 4 | 100% | 85% |
| Nash | 4 | 5 | 100% | 100% |
| Pingree | 8 | 7 | 100% | 100% |
| Seach | 4 | 9 | 100% | 80% |
| Talbot | 4 | 8 | 100% | 80% |
| Wessagusset | 4 | 9 | 100% | 100% |

Capacity

| Name | # of core Class | Calc Enrol @23 | Current Enrollment | % Capacity |
|-------------|-----------------|----------------|--------------------|------------|
| Seach | 19 | 437 | 384 | 88% |
| Wessagusset | 15 | 345 | 327 | 95% |
| Hamilton | 17 | 391 | 350 | 90% |
| Academy | 16 | 368 | 352 | 96% |
| Murphy | 12 | 276 | 283 | 103% |
| Talbot | 13 | 299 | 296 | 99% |
| Pingree | 12 | 276 | 267 | 97% |
| Nash | 12 | 276 | 261 | 95% |
| District | 116 | 2668 | 2520 | 94% |

Capacity



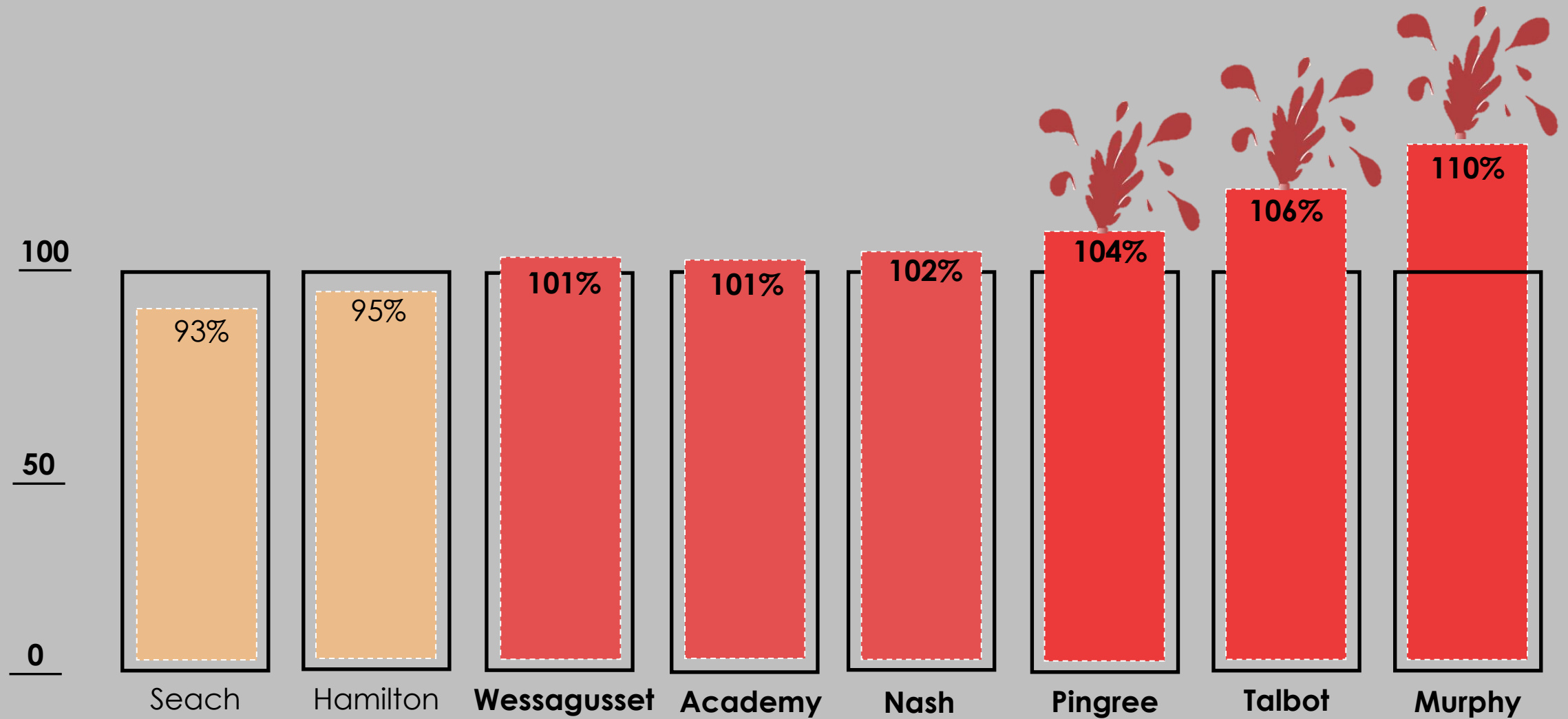
Capacity Impacts

In 2029

| Name | # of core Class. | Calc Enrol @23 | Current Enrollment | Projected 2029 | % Capacity |
|-------------|------------------|----------------|--------------------|----------------|------------|
| Seach | 19 | 437 | 384 | 405 | 93% |
| Wessagusset | 15 | 345 | 327 | 348 | 101% |
| Hamilton | 17 | 391 | 350 | 371 | 95% |
| Academy | 16 | 368 | 352 | 373 | 101% |
| Murphy | 12 | 276 | 283 | 304 | 110% |
| Talbot | 13 | 299 | 296 | 317 | 106% |
| Pingree | 12 | 276 | 267 | 288 | 104% |
| Nash | 12 | 276 | 261 | 282 | 102% |
| District | 116 | 2668 | 2520 | 2685 | 102% |

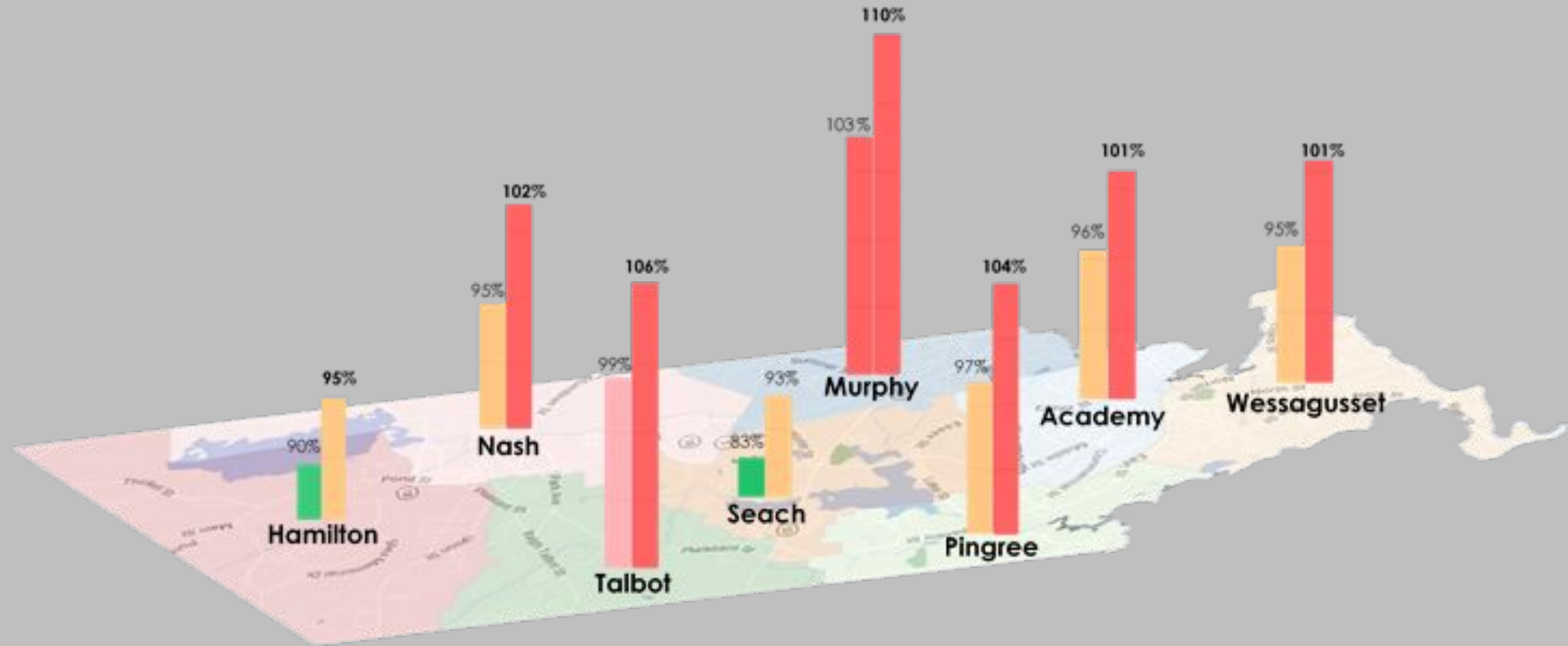
Capacity

2029



Capacity

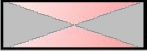

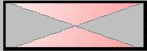
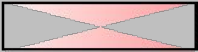
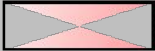
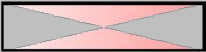


2029



Capacity

Utilizing Current MSBA Design Standards

963 CMR 2.06

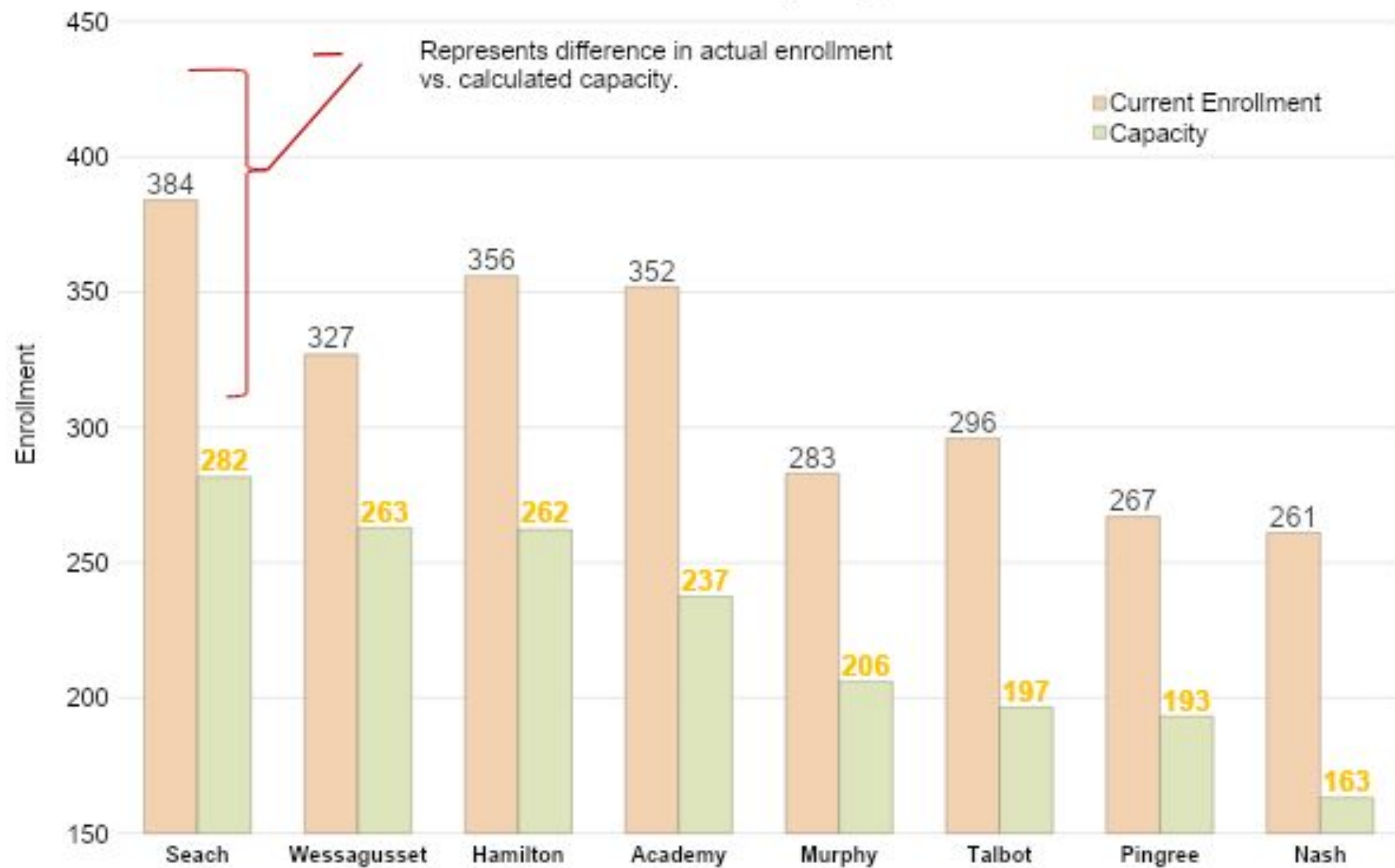
| | 963 CMR 2.06 | | | | Variations from MSBA | |
|-------------|--------------|-------------|--------------------|--------------|----------------------|--|
| Name | GSF/Student | 963 CMR GSF | Current Enrollment | Existing GSF | Difference GSF | % Difference |
| Seach | 171 | 65664 | 384 | 48,166 | -17498 |  -36% |
| Wessagusset | 178 | 58206 | 327 | 46,800 | -11406 |  -24% |
| Hamilton | 174 | 61944 | 356 | 45,640 | -16304 |  -36% |
| Academy | 177 | 62304 | 352 | 42,035 | -20269 |  -48% |
| Murphy | 180 | 50940 | 283 | 37,103 | -13837 |  -37% |
| Talbot | 180 | 53280 | 296 | 35,378 | -17902 |  -51% |
| Pingree | 180 | 48060 | 267 | 34,780 | -13280 |  -38% |
| Nash | 180 | 46980 | 261 | 29,362 | -17618 |  -60% |

Capacity

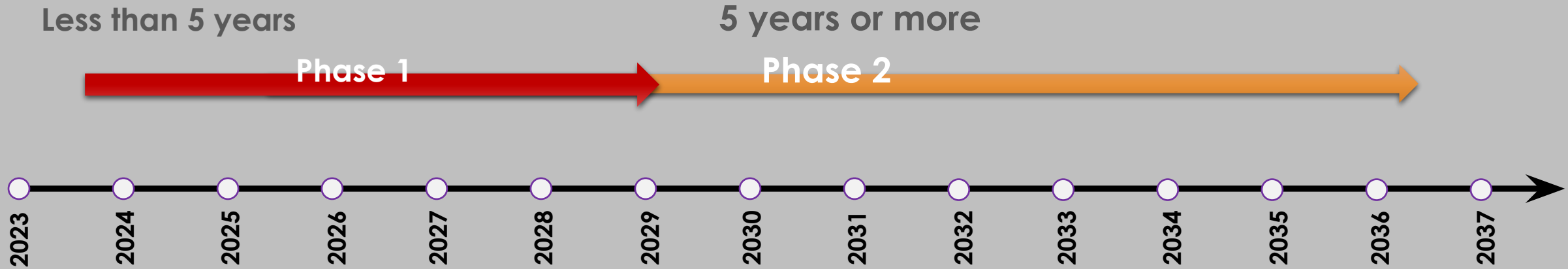
Utilizing Current
MSBA Design
Standards
963 CMR 2.06

| Scool Capacity utilizing MSBA Standards | | | |
|---|--------------------|----------|--------|
| School | Current Enrollment | Capacity | % Over |
| Se a c h | 384 | 282 | 36% |
| We s s a g u s s e t | 327 | 263 | 24% |
| Ha m i l t o n | 356 | 262 | 36% |
| A c a d e m y | 352 | 237 | 48% |
| M u r p h y | 283 | 206 | 37% |
| T a l b o t | 296 | 197 | 51% |
| P i n g r e e | 267 | 193 | 38% |
| N a s h | 261 | 163 | 60% |
| | 2526 | 1803 | 41% |

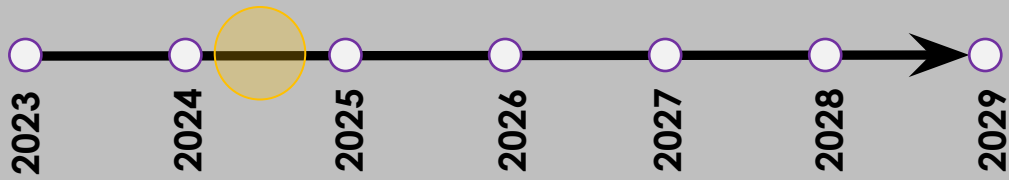
Enrollment vs. MSBA's Capacity



Finding Solutions



Phase 1

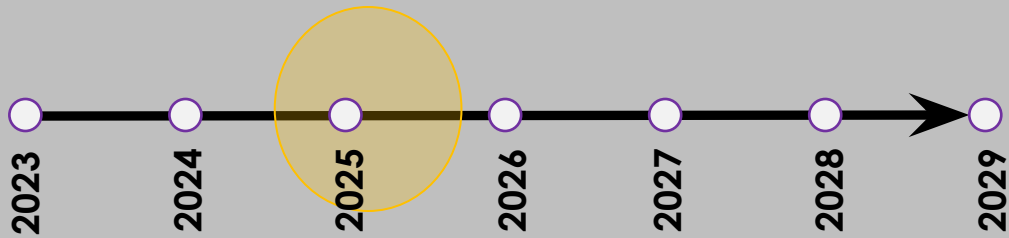


Adding Modular Classrooms



- Lower cost than an addition
- Open for 2024-2025 school year
- Alleviates some of the enrollment increases from Southfield
- Very Accelerated Project

Phase 1

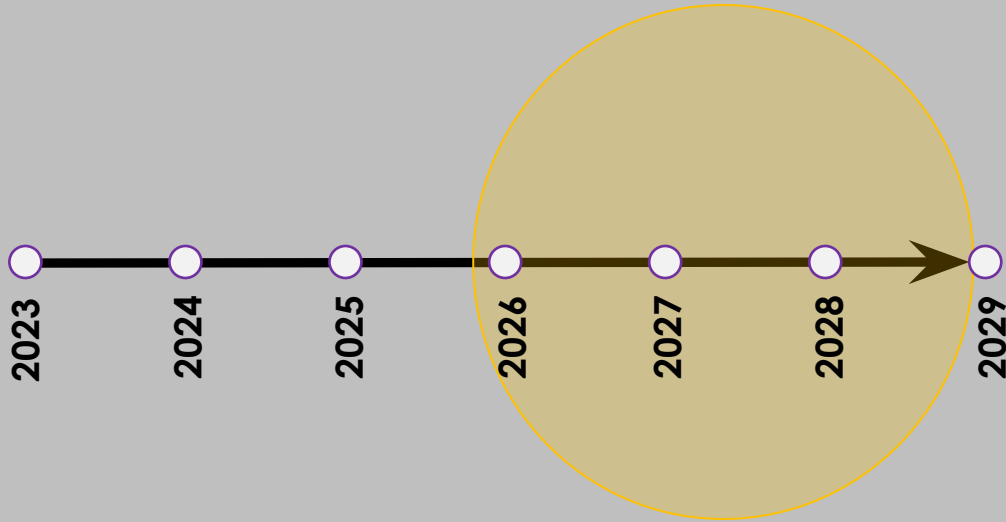


Boiler Replacement and Heat distribution improvements



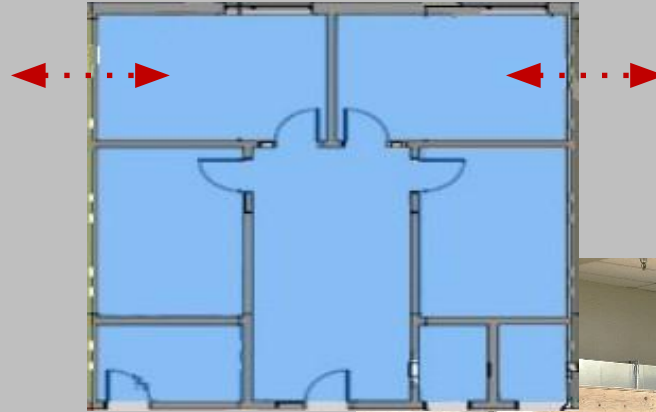
- If opened in September 2025, will alleviate most elementary enrollment increases
- Redistrict, magnet, opening options.
- Building requires further capital, oldest facility in the district at 73 years.

Phase 1



Murphy
Pingree
Talbot
Wessagusset

Interior renovations at schools with
greatest space needs



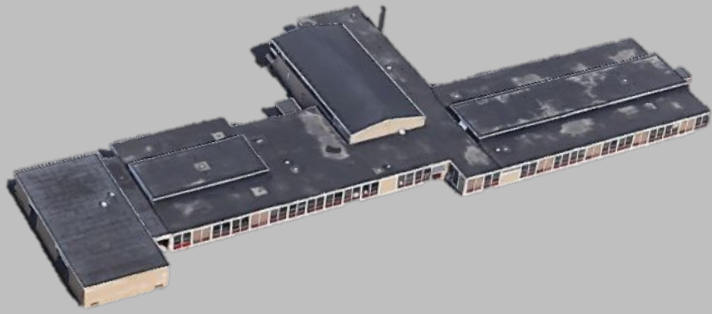
- Requires design services, HVAC improvements and interior construction.
- Will not alleviate all space challenges.
- Focus on Special Education and ELL.

Phase 2

New Core Capital
Project with MSBA
963 CMR 2.06



**Build a new
Unified
Elementary
School**



Nash Elementary School

1958

29,362 Sq. Ft.

261 Students

3

2016 MSBA Building Condition Rating

2.30

Overall Qualitative Rating

Murphy Elementary School

1953

37,103 Sq. Ft.

283 Students

3

2016 MSBA Building Condition Rating

2.43

Overall Qualitative Rating

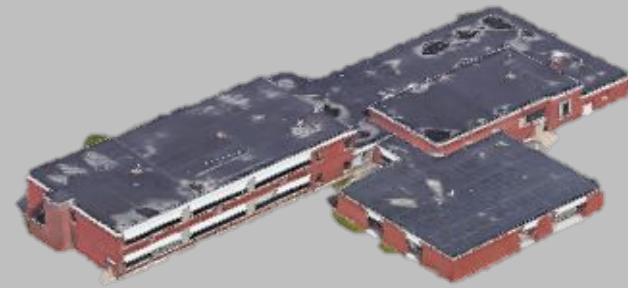
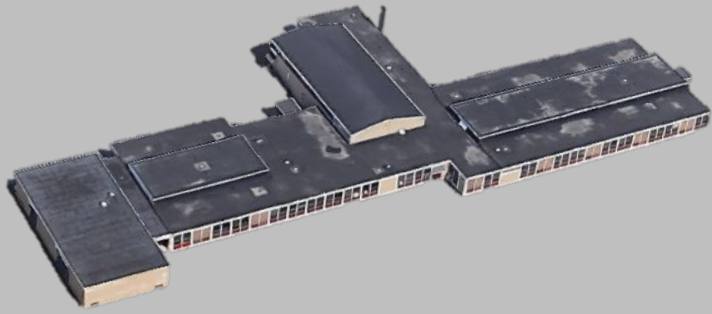


New Core Capital Murphy-Nash Unified Elementary School

Enrollment: 545+

Building SF: 82,688 Sq. Ft.

Unified



Nash Elementary School

1958

29,362 Sq. Ft.

261 Students

3

2016 MSBA Building Condition Rating

2.30

Overall Qualitative Rating

Pingree Elementary School

1957

34730 Sq. Ft.

267 Students

1

2016 MSBA Building Condition Rating

2.29

Overall Qualitative Rating

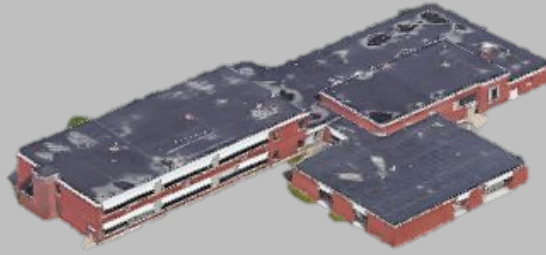
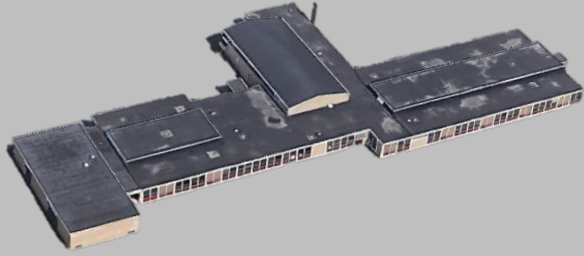


New Core Capital Nash-Pingree Unified Elementary School

Enrollment: 530+

Building SF: 81,620 Sq. Ft.

Unified



Nash Elementary School

1958
29,362 Sq. Ft.
261 Students

Pingree Elementary School

1957
34,730 Sq. Ft.
267 Students

Murphy Elementary School

1953
37,103 Sq. Ft.
283 Students

3 2016 MSBA Building Condition Rating

2.30 Overall Qualitative Rating

1 2016 MSBA Building Condition Rating

2.29 Overall Qualitative Rating

3 2016 MSBA Building Condition Rating

2.43 Overall Qualitative Rating



New Core Capital Murphy-Nash-Pingree Unified Elementary School

Enrollment: 560+
19,045 Sq. Ft.

Unified

| RATING | DESCRIPTION | POTENTIAL FUTURE ACTION | BUILDING FACILITY CONDITION INDEX |
|--------|--|---|-----------------------------------|
| 1 | The building is in good condition with few or no building systems needing attention. | General Maintenance | <24.5% |
| 2 | The building is in generally good condition with a few building systems that may need some attention. | Minor Repair or Renovation | >=24.5% and <39.5% |
| 3 | The building is in fair to poor condition with some building systems needing repair or replacement | Moderate Repair or Renovation | >= 39.5% and <59.5% |
| 4 | The building is in poor condition with many building systems requiring attention, and further study to determine the extent of renovations or potential replacement. | Major Renovation or Potential Replacement | >=59.5% |

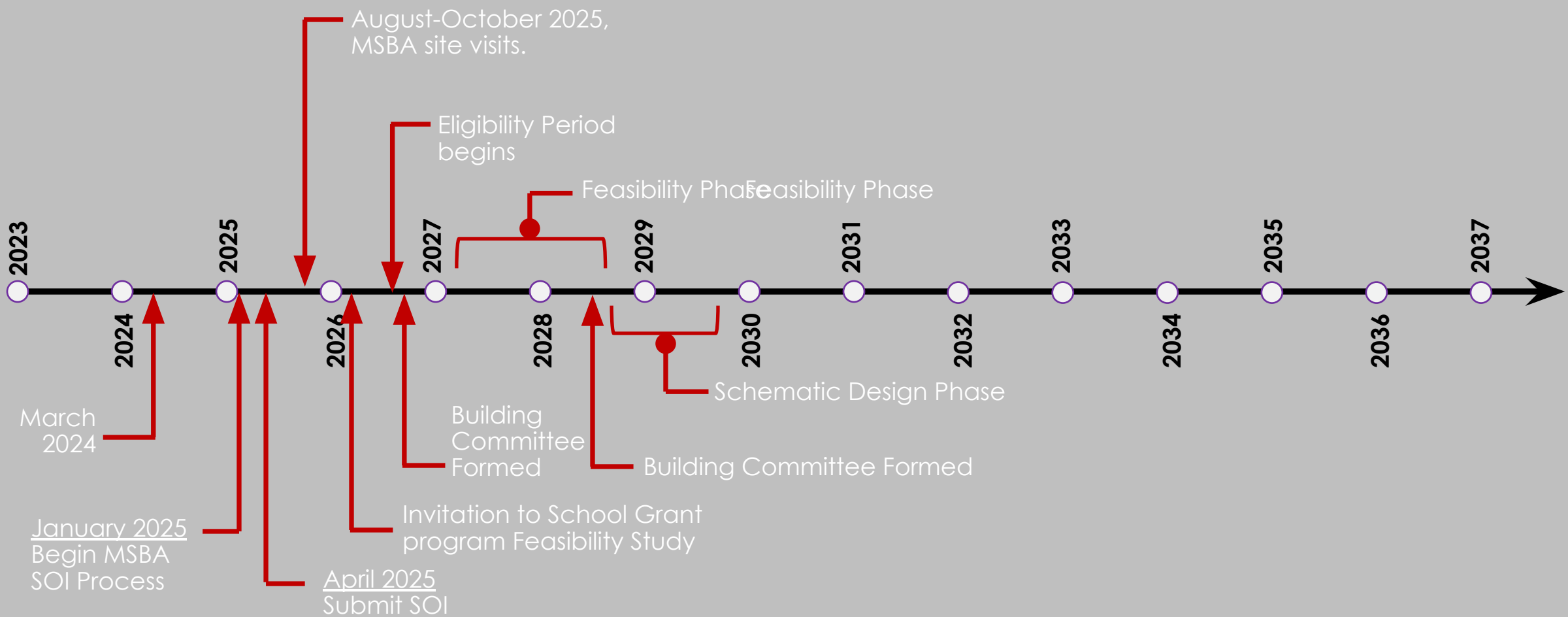
| | |
|-------------|------|
| Academy | 2.91 |
| Hamilton | 2.74 |
| Johnson | 2.66 |
| Murphy | 2.43 |
| Nash | 2.30 |
| Pingree | 2.29 |
| Seach | 2.52 |
| Talbot | 2.54 |
| Wessagusset | 2.67 |

3 The building is in fair to poor condition with some building systems needing repair or replacement.

With their focus on each district's identified Priority SOI, **MSBA staff then look at this smaller cohort of submitted SOIs to assess urgency and need, focusing on:**

- The **2016 School Survey rating of building condition**;
- The 2016 School Survey rating of general environment;
- The previous or ongoing Core Program project activity with the MSBA; and,
- Section 8 of the MSBA's [statute](#).

Phase 2



- The 2016 School Survey rating of building condition;
- The 2016 School Survey rating of general environment;
- The previous or ongoing Core Program project activity with the MSBA; and,
- Section 8 of the MSBA's [statute](#).

